



The sharpest name in dentistry.

# Hygiene Instruments

Nordent® has created leading innovations dedicated to practice productivity for over 55 years. From developing the first-ever ergonomic instrument to creating UltraSteel™ for the sharpest, longest-lasting scalers and cures.

Crafted in the USA by master artisans, each instrument reflects our commitment to excellence, providing hygienists with premium quality instruments for optimal patient care.

## HYGIENE INSTRUMENTS

XDURA® SCALERS & CURETTES	2
RELYANT® SCALERS & CURETTES FLYER	2
ONPOINT™ SCALERS & CURETTES FLYER	3
HYGIENE HANDLES	4-5
SINGLE END SCALERS	6
ANTERIOR SCALERS	7-11
POSTERIOR SCALERS	12-15
SCALETTE®	16
GOLDMAN-FOX	17-18
CURETTES	18-22
DIAMOND FURCATION FILES	23
IMPLANT MAINTENANCE	24
TRUGRACEY® CURETTES	25-32
HARTZELL™ CONE SOCKET	33-36
ONPOINT™ SCALERS & CURETTES + ONPOINT™ GRACEY CURETTES	37-43
HYGIENE HERO KITS	43



# XDURA®

## SCALERS AND CURETTES

Featuring UltraSteel™ Technology

XDURA® features UltraSteel™ technology that lasts longer than ANY other brand to reduce your instrument costs

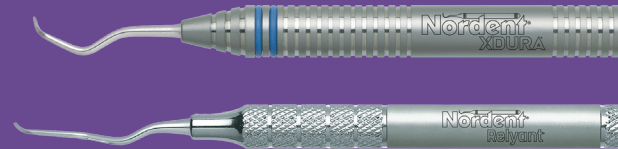


\*Data on file by request

## COMPLIMENTARY Sharpening on XDURA® and Relyant® Scalars and Currettes\*\*

### Professional Sharpening is Easy as 1-2-3

1. Request COMPLIMENTARY Nordent Shipping Kit at Nordent.com
2. Print label from our website
3. Pack and ship



\*\*For the life of the instrument

# Relyant®

## SCALERS AND CURETTES

Relyant® scalars and currettes feature our signature stainless steel that has been an industry standard for over 50 years



# ONPOINT™

## SCALERS AND CURETTES

UPDATED AND ENHANCED DESIGN

### Premium Quality

Nordent tips made in the USA by master craftsmen.

### Sharper

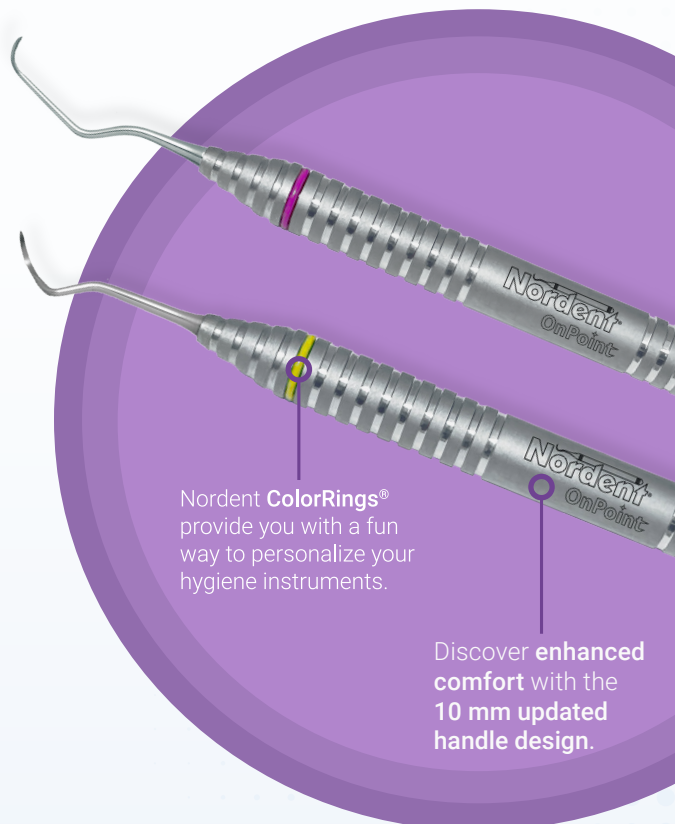
UltraSteel™ technology results in tips with long-lasting sharpness and strength.

### Customizable

Nordent OnPoint handles come with two interchangeable ColorRings®, one on each end of the instrument.

# OnPoint™

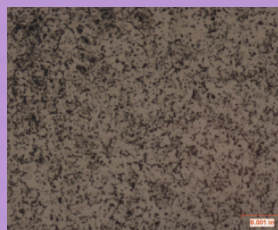
# Nordent®



Nordent ColorRings® provide you with a fun way to personalize your hygiene instruments.

Discover enhanced comfort with the 10 mm updated handle design.

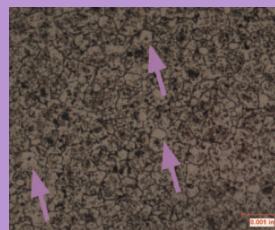
Under **500x magnification** these SEM photos clearly show the **superior micro-structure** and **uniform carbide particle distribution** of our Nordent UltraSteel technology



UltraSteel Technology  
Scalers & Curescutes



Leading sharpen-less scaler



All other major brands (440A)

UltraSteel technology takes advantage of advancements in metallurgy and cryogenic hardening to produce a micro-structure not previously possible. All other scalers are made from stainless steels that have large, isolated carbide molecules. This is why hardness and wear resistance can be inconsistent.

UltraSteel technology features extremely fine carbide particles that are evenly distributed throughout the micro-structure, resulting in tips with long-lasting sharpness and strength.

# HYGIENE HANDLES

## DuraLite® ColorRings®

The DuraLite® ColorRings® handle has the same large 3/8" (9.5 mm) diameter as our DuraLite Round design. The handle design has a more gradual taper from the tip to the grip so that your fingers are even more comfortable closer to the tip. In addition, we've extended the ControlRing™ grip by 50% to give you maximum slip-free gripping power over a larger portion of the handle. The handle has a gentle texture to reduce glare and is 100% stainless steel to make it easy to clean and sterilize by any method. The DuraLite ColorRings handle incorporates four color ring positions that are below the finger grip surface allowing you to better identify, organize and customize your instrumentation. Our innovative design makes customizing the DuraLite ColorRings handle simple and easy.

Double End



Single End



## XDURA® DuraLite® ColorRings®

Our XDURA instruments are available with the DuraLite ColorRings handle.

Double End *(Only)*



## ColorRings®

ColorRings come in 14 different colors and are available in single color packages of 48-rings. Use the item codes below to select your colors.

 RING-BL Blue	 RING-TE Teal	 RING-FS Fuchsia	 RING-YW Yellow	 RING-LG Lt Green	 RING-WI White	 RING-RD Red
 RING-GN Green	 RING-OR Orange	 RING-PR Purple	 RING-BR Brown	 RING-BK Black	 RING-GR Gray	 RING-PK Pink

With 14 colors available, how will you color your world?

## DuraLite® Round

Our DuraLite Round has a large 3/8" (9.5 mm) diameter and is extremely lightweight for maximum tactile sensitivity. Our exclusive ControlRing design gives you the ultimate in grip and control. It requires less finger pressure resulting in less hand and finger fatigue. The handle has a gentle texture to reduce glare and is 100% stainless steel to make it easy to clean and sterilize by any method.









Double End



Single End



**HANDLE SYMBOL KEY:**

 XDURA DuraLite ColorRings	 XDURA DuraLite Round	 Relyant		
 DuraLite ColorRings	 DuraLite Round	 DuraLite Hex	 Medium Round	 OnPoint

# HYGIENE HANDLES

## ⊗ XDURA® DuraLite® Round

Our XDURA instruments are available with DuraLite Round Handles.

Double End *(Only)*



## Ⓜ Relyant®

The Relyant handle features an ergonomic handle (9.5 mm in diameter) that is lightweight and all stainless steel, designed for maximum comfort. The satin finish reduces glare and can be sterilized with any method.

Double End *(Only)*



## △ OnPoint™

The OnPoint handle comes with a 3/8" (9.5 mm) diameter with segmented knurled grip for comfortable control. The satin finish reduces glare which can also be cleaned and sterilized by any method.

Double End *(Only)*



## ⬡ DuraLite® HEXagonal

Our original ERGONOMIC handle that changed the industry! DuraLite HEX has a large 7/16" (11 mm) diameter that comfortably positions your hand and fingers in the "Modified Pen Grasp" position. The handle has a gentle texture to reduce glare and is 100% stainless steel to make it easy to clean and sterilize by any method.

Double End *(Only)*



## ● Medium Round

The Medium Round #4 handle has a moderate 5/16" (8mm) diameter with a segmented knurled grip to provide excellent control. The handle is 100% stainless steel and the finish is bright electro-polished to make it easy to clean and sterilize by any method.

Double End



Single End



**HANDLE SYMBOL KEY:** ⊗ XDURA DuraLite ColorRings    ⊗ XDURA DuraLite Round    Ⓜ Relyant  
 ● DuraLite ColorRings    ○ DuraLite Round    ⬡ DuraLite Hex    ● Medium Round    △ OnPoint

# SINGLE END SCALERS

Single end scalers are an excellent choice for pedodontic practices to remove deposits from supragingival surfaces and in orthodontic practices to remove cement. Single end scalers should be used when a double end instrument is not suitable or required. Nordent will produce any of our hygiene tip patterns in a single end configuration upon request.



## Sickle N5

A moderate size, medium-reach sickle with a blade width of 0.9mm that tapers to a point.

- Handle Selection:  CESC N5 (shown)  RESC N5  RSC N5



## Sickle 109

A moderate size, long-reach sickle with a blade width of 0.9 mm that tapers to a point.

- Handle Selection:
- CESC109
  - RESC109
  - RSC109



## Towner U15

A large size, long-reach sickle with a blade width of 1 mm that tapers to a point.

- Handle Selection:
- CESC U15
  - RESC U15
  - RSC U15



## Ivory CI-1

A moderate size, medium-reach sickle with a blade width of 2 mm that tapers to a point.

- Handle Selection:
- CESC CI1
  - RESC CI1
  - RSC CI1



## Younger-Good 15

A small size, short-reach sickle on a straight shank with a blade width of 1 mm that tapers to a point.

- Handle Selection:
- CESC YG15
  - RESC YG15
  - RSC YG15



## Univ. of So. Cal. 128

A moderate size, medium-reach sickle on a straight shank with a blade width of 1.2 mm that tapers to a point.

- Handle Selection:
- CESC 128
  - RESC 128
  - RSC 128



## Whiteside 2

A small size, short-reach sickle on a straight shank with a 1.5 mm blade that tapers to a point.

- Handle Selection:
- CESC W2
  - RESC W2
  - RSC W2



## Nebraska 128

Thinner version of the USC128 with a blade width of 1mm.

- Handle Selection:
- CESC NE128
  - RESC NE128
  - RSC NE128



## Jacquette J1S

A small size, straight blade Jacquette with a 0.9 mm blade width that tapers to a point. This tip is also known as the Jacquette #33.

- Handle Selection:
- CESC J1S
  - RESC J1S
  - RSC J1S



## "B" Scaler

A moderate size, straight blade with a 0.5 mm width that has two sharp edges on the face and the back of the blade. This enables the blade to be used in a push or pull stroke.

- Handle Selection:
- CESC B
  - RESC B
  - RSC B

- HANDLE SYMBOL KEY:**  XDURA DuraLite ColorRings  XDURA DuraLite Round  Relyant
- DuraLite ColorRings  DuraLite Round  DuraLite Hex  Medium Round  OnPoint

# ANTERIOR SCALERS

Anterior Scalers are used to remove deposits from supragingival surfaces of anterior teeth. There are three basic design classifications for anterior scalers—Sickle Scalers (curved blade with a pointed tip), Jacquette Scalers (straight blade with a pointed tip) and Hoe Scalers (flat or rounded blades). In this section, you will find many anterior scaler combinations and designs for every application.

## Double End Sickles



**Sickle N5-5S** Both sickles have an identical moderate size, medium-reach length. The N5 blade width is 0.9 mm and the N5S blade is reduced by 20% to 0.7 mm to help gain access in very tight contact areas.

Handle Selection:	CENS5-5S	RENS5-5S	VSC5-5S	*Complimentary Sharpening Offered
CESC5-5S (shown)	RESC5-5S	ESC5-5S	RSC5-5S	OPP5-5S



**Sickle N5 Younger-Good #15** Combines the moderate size, medium-reach N5 sickle that has a blade width of 0.9 mm with a Younger-Good 15 small size short-reach sickle on a straight shank that has a blade width of 1 mm.

Handle Selection:	CENS5-YG15	RENS5-YG15	VSC5-YG15	*Complimentary Sharpening Offered
CESC5-YG15 (shown)	RESC5-YG15	ESC5-YG15	RSC5-YG15	N/A



**Towner U15-109 Sickle** Combines the large size, long-reach Towner U15 sickle that has a blade width of 1 mm with a moderate size long-reach sickle with a blade width of 0.9 mm.

Handle Selection:	CENSU15-109	RENSU15-109	VSCU15-109	*Complimentary Sharpening Offered
CESC5-109 (shown)	RESCU15-109	ESCU15-109	RSCU15-109	N/A



**Towner U15-Sickle N5** Combines the large size, long-reach Towner U15 sickle that has a blade width of 1 mm with a moderate size, medium-reach N5 sickle that has a blade width of 0.9 mm.

Handle Selection:	CENSU15-N5	RENSU15-N5	VSCU15-N5	*Complimentary Sharpening Offered
CESC5-N5 (shown)	RESCU15-N5	ESCU15-N5	RSCU15-N5	N/A



**Towner U15-Whiteside 2** Combines the large size, long-reach Towner U15 sickle that has a blade width of 1 mm with a small size short reach sickle on a straight shank with a 1.5 mm blade.

Handle Selection:	CENSU15-W2	RENSU15-W2	VSCU15-W2	*Complimentary Sharpening Offered
CESC5-W2 (shown)	RESCU15-W2	ESCU15-W2	RSCU15-W2	N/A

<b>HANDLE SYMBOL KEY:</b>	XDURA DuraLite ColorRings	XDURA DuraLite Round	Relyant
DuraLite ColorRings	DuraLite Round	DuraLite Hex	Medium Round  OnPoint

## Double End Sickles Cont.



**University of Texas 103-106** Two contra-angle, short-reach sickles. The 103 blade width is 1.4mm and the 106 blade width is 1mm.

Handle Selection:	<input checked="" type="checkbox"/> CENS103-106	<input checked="" type="checkbox"/> RENS103-106	<input checked="" type="checkbox"/> VSC103-106	*Complimentary Sharpening Offered
<input checked="" type="checkbox"/> CESC103-106 (shown)	<input type="checkbox"/> RESC103-106	<input type="checkbox"/> ESC103-106	<input type="checkbox"/> RSC103-106	<input type="checkbox"/> OPP103-106



**Offset Sickle USC 3-4** Both sickles have identical moderate size, medium-reach length and blade widths of 1.2 mm that taper to a point. The tips have a 10° mirror image offset to allow better access to anteriors and premolars.

Handle Selection:	<input checked="" type="checkbox"/> CENSUSC3-4	<input checked="" type="checkbox"/> RENSUSC3-4	<input checked="" type="checkbox"/> VSCUSC3-4	*Complimentary Sharpening Offered
<input checked="" type="checkbox"/> CESCUSC3-4 (shown)	<input type="checkbox"/> RESCUSC3-4	<input type="checkbox"/> ESCUSC3-4	<input type="checkbox"/> RSCUSC3-4	<input type="checkbox"/> OPPUSC3-4



**Offset Sickle N67** Both sickles have an identical moderate size, medium-reach length and blade widths of 0.9 mm that taper to a point. The tips have a 10° mirror image offset to allow better access to anteriors and premolars. This design is also known as H6/H7.

Handle Selection:	<input checked="" type="checkbox"/> CENSN67	<input checked="" type="checkbox"/> RENSN67	<input checked="" type="checkbox"/> VSCN67	*Complimentary Sharpening Offered
<input checked="" type="checkbox"/> CESC67 (shown)	<input type="checkbox"/> RESCN67	<input type="checkbox"/> ESCN67	<input type="checkbox"/> RSCN67	<input type="checkbox"/> OPPN67



**Offset Sickle NMJ** Both sickles have an identical moderate size, medium-reach length and blade widths of 0.8 mm that taper to a point. The tips have a 20° mirror image offset to allow better access to anteriors and premolars. Also known as the R138.

Handle Selection:	<input checked="" type="checkbox"/> CENSNMJ	<input checked="" type="checkbox"/> RENSNMJ	<input checked="" type="checkbox"/> VSCNMJ	*Complimentary Sharpening Offered
<input checked="" type="checkbox"/> CESCNMJ (shown)	<input type="checkbox"/> RESCNMJ	<input type="checkbox"/> ESCNMJ	<input type="checkbox"/> RSCNMJ	<input type="checkbox"/> OPPNMJ

## Sickle / Hoe Combinations



**Sickle/Spoon #N5-N1** Combines the standard N5 sickle that has a 0.9 mm blade width that tapers to a point with a long reach contra angle spoon blade hoe that has a blade diameter of 2 mm for anterior lingual surfaces.

Handle Selection:	<input checked="" type="checkbox"/> CENSN5-N1	<input checked="" type="checkbox"/> RENSN5-N1	<input checked="" type="checkbox"/> VSCN5-N1	*Complimentary Sharpening Offered
<input checked="" type="checkbox"/> CESC5-N1 (shown)	<input type="checkbox"/> RESCN5-N1	<input type="checkbox"/> ESCN5-N1	<input type="checkbox"/> RSCN5-N1	<input type="checkbox"/> OPPN5-N1



**Sickle/Spoon #1** Combines a small size, medium-reach length sickle that has a 0.8 mm blade width that tapers to a point with a long reach contra-angle spoon blade hoe that has a blade diameter of 2 mm for anterior lingual surfaces.

Handle Selection:	<input checked="" type="checkbox"/> CENS1	<input checked="" type="checkbox"/> RENS1	<input checked="" type="checkbox"/> VSC1	*Complimentary Sharpening Offered
<input checked="" type="checkbox"/> CESC1 (shown)	<input type="checkbox"/> RESC1	<input type="checkbox"/> ESC1	<input type="checkbox"/> RSC1	<input type="checkbox"/> OPP1

## Sickle/Hoe Combinations Cont.



**Sickle N5-Hoe #48** Combines the moderate size, medium-reach N5 sickle that has a blade width of 0.9 mm that tapers to a point with a small contra-angle hoe that has a blade width of 2 mm for anterior lingual surfaces. For routine use.

Handle Selection:	<input checked="" type="radio"/> CENSN5-48	<input checked="" type="radio"/> RENSN5-48	<input checked="" type="radio"/> VSCN5-48	*Complimentary Sharpening Offered
<input checked="" type="radio"/> CESC5-48 (shown)	<input type="radio"/> RESCN5-48	<input type="radio"/> ESCN5-48	<input type="radio"/> RSCN5-48	<input type="radio"/> OPPN5-48



**Towner U15-Hoe #47** Combines the large size, long-reach Towner U15 sickle that has a blade width of 1 mm that tapers to a point with a medium contra-angle hoe that has a blade width of 2.5 mm for anterior lingual surfaces. For heavier use.

Handle Selection:	<input checked="" type="radio"/> CENSU15-47	<input checked="" type="radio"/> RENSU15-47	<input checked="" type="radio"/> VSCU15-47	*Complimentary Sharpening Offered
<input checked="" type="radio"/> CESC15-47 (shown)	<input type="radio"/> RESCU15-47	<input type="radio"/> ESCU15-47	<input type="radio"/> RSCU15-47	<input type="radio"/> OPPU15-47



**Towner U15-Kirkland #13** Combines the large size, long-reach Towner U15 sickle that has a blade width of 1 mm that tapers to a point with a large contra-angle Kirkland hoe that has a blade width of 3.5 mm for use in periodontal surgery.

Handle Selection:	<input checked="" type="radio"/> N/A	<input checked="" type="radio"/> N/A	<input checked="" type="radio"/> VSCU15-K13	*Complimentary Sharpening Offered
<input checked="" type="radio"/> CESC15-K13 (shown)	<input type="radio"/> RESCU15-K13	<input type="radio"/> ESCU15-K13	<input type="radio"/> RSCU15-K13	<input type="radio"/> N/A

## Lingual Hoes



**Anterior Lingual Stain Remover (ALSR)** Combines a contra-angled anterior hoe and a contra-angled spoon into one instrument that easily removes stain from anterior lingual surfaces. The hoe has a 2 mm blade width and makes it easy to “push back” the sulcus as you scale along the gum-line. The spoon has a 2 mm diameter blade that easily adapts to the concavities and grooves of the upper lingual anatomy.

Handle Selection:	<input checked="" type="radio"/> CENSALSR	<input checked="" type="radio"/> RENSALSR	<input checked="" type="radio"/> VSCALSR	*Complimentary Sharpening Offered
<input checked="" type="radio"/> CESCALSR (shown)	<input type="radio"/> RESALSR	<input type="radio"/> ESCALSR	<input type="radio"/> RSCALSR	<input type="radio"/> OPPALSR

### Adapting the Anterior Lingual Stain Remover



The contra-angled spoon end is specifically designed to allow easy access to upper anterior lingual surfaces. Contra-angle bends provide excellent visibility and the spoon blade adapts perfectly to the grooves and concavities of the upper lingual anatomy.



The contra-angled hoe end is ideal for lower anterior lingual surfaces. The contra-angle bends allow the clinician to reach over the anatomy. The hoe blade provides efficient stain and calculus removal from the flat anatomy of lower lingual surfaces. Use the back of the blade to push the gingiva back to scale along the gingival margin.

**HANDLE SYMBOL KEY:**

<input checked="" type="radio"/> XDURA DuraLite ColorRings	<input checked="" type="radio"/> XDURA DuraLite Round	<input checked="" type="radio"/> Relyant
<input checked="" type="radio"/> DuraLite ColorRings	<input type="radio"/> DuraLite Round	<input type="radio"/> DuraLite Hex
<input type="radio"/> Medium Round	<input type="radio"/> OnPoint	

## Lingual Hoes Cont.



**Cumine #152** Large spoon end for stain removal with a sickle for supragingival scaling.

Handle Selection:	<input checked="" type="radio"/> N/A	<input checked="" type="radio"/> N/A	<input checked="" type="radio"/> VSCCUMINE	*Complimentary Sharpening Offered
<input checked="" type="radio"/> CESCUMINE (shown)	<input type="radio"/> RESCUMINE	<input type="radio"/> ESCCUMINE	<input type="radio"/> RSCCUMINE	<input type="radio"/> N/A



**Contra-Angle Hoe #45A-46A** Mirror image hoes that have opposing 10° cutting edge angles across the 2.5 mm blades that are set on contra-angle shanks.

Handle Selection:	<input checked="" type="radio"/> CENS45A-46A	<input checked="" type="radio"/> RENS45A-46A	<input checked="" type="radio"/> VSC45A-46A	*Complimentary Sharpening Offered
<input checked="" type="radio"/> CESC45A-46A (shown)	<input type="radio"/> RESC45A-46A	<input type="radio"/> ESC45A-46A	<input type="radio"/> RSC45A-46A	<input type="radio"/> OPP45A-46A



**Straight Hoe #45-46** Mirror image hoes that have opposing 10° cutting edge angles across the 2.5 mm blades that are set on a straight shank.

Handle Selection:	<input checked="" type="radio"/> CENS45-46	<input checked="" type="radio"/> RENS45-46	<input checked="" type="radio"/> VSC45-46	*Complimentary Sharpening Offered
<input checked="" type="radio"/> CESC45-46 (shown)	<input type="radio"/> RESC45-46	<input type="radio"/> ESC45-46	<input type="radio"/> RSC45-46	<input type="radio"/> OPP45-46



**Urban Hoe #6-7** Mirror image with 1.5 mm blades that are set on 12 mm long shanks that are angled at 35° for anterior application.

Handle Selection:	<input checked="" type="radio"/> N/A	<input checked="" type="radio"/> N/A	<input checked="" type="radio"/> VSCOR6-7	*Complimentary Sharpening Offered
<input checked="" type="radio"/> CESCOR6-7 (shown)	<input type="radio"/> RESCOR6-7	<input type="radio"/> ESCOR6-7	<input type="radio"/> RSCOR6-7	<input type="radio"/> N/A



**Urban Hoe #8-9** Mirror image with 1.5 mm blades that are set on 12 mm long shanks that are angled at 35° for posterior application.

Handle Selection:	<input checked="" type="radio"/> N/A	<input checked="" type="radio"/> N/A	<input checked="" type="radio"/> VSCOR8-9	*Complimentary Sharpening Offered
<input checked="" type="radio"/> CESCOR8-9 (shown)	<input type="radio"/> RESCOR8-9	<input type="radio"/> ESCOR8-9	<input type="radio"/> RSCOR8-9	<input type="radio"/> N/A

## Jacquettes



**Jacquette #1-1S** Large and small combination. The large blade is 5 mm long with a 1 mm blade width that tapers to a point. The small blade is 4 mm long with a 0.9 mm blade width that tapers to a point. This Jacquette is also known as the #30-33.

Handle Selection:	<input checked="" type="radio"/> N/A	<input checked="" type="radio"/> N/A	<input checked="" type="radio"/> VSCJ1-1S	*Complimentary Sharpening Offered
<input checked="" type="radio"/> CESCJ1-1S (shown)	<input type="radio"/> RESCJ1-1S	<input type="radio"/> ESCJ1-1S	<input type="radio"/> RSCJ1-1S	<input type="radio"/> N/A

## Jacquettes Cont.



**Morse #0-00** Both tips have a straight shank with very fine Jacquette blades. The #0 blade is 3.5 mm long with a 0.7 mm width that tapers to a point. The #00 blade is 2 mm long with a 0.6 mm width that tapers to a point. Extremely useful for pits and fissures on occlusal surfaces.

Handle Selection:	CENSM0-00	RENSM0-00	VSCM0-00	*Complimentary Sharpening Offered
CЕСSM0-00 (shown)	RESCM0-00	ESCM0-00	RSCM0-00	OPPM0-00

## Jacquette/Sickle Combinations



**Goldman Fox 21S - Towner U15** Combines a small Jacquette blade that has a 4 mm long and 0.7 mm blade width that tapers to a point with a long-reach Towner U15 sickle that has a blade width of 1 mm that tapers to a point.

Handle Selection:	CENS21S-U15	RENS21S-U15	VSC21S-U15	*Complimentary Sharpening Offered
CЕСS21S-U15 (shown)	RESC21S-U15	ESC21S-U15	RSC21S-U15	OPP21S-U15



**Jacquette #1S - Sickle N5** Combines a small size, straight blade jacquette that has a 0.9 mm blade width that tapers to a point with a moderate size, medium-reach N5 sickle that has a blade width of 0.9 mm that tapers to a point. Also known as the #H5-33.

Handle Selection:	CENSJ1S-N5	RENSJ1S-N5	VSCJ1S-N5	*Complimentary Sharpening Offered
CЕСSJ1S-N5 (shown)	RESCJ1S-N5	ESCJ1S-N5	ESCJ1S-N5	OPPJ1S-N5



**Jacquette #1 - Towner U15** Combines a larger size, straight blade jacquette that has a 1.0 mm blade width that tapers to a point with a long-reach Towner U15 sickle that has a blade width of 1 mm that tapers to a point. Also known as the U15-30.

Handle Selection:	N/A	N/A	VSCJ1-U15	*Complimentary Sharpening Offered
CЕСCJ1-U15 (shown)	RESCJ1-U15	ESCJ1-U15	RSCJ1-U15	N/A



**Jacquette #1S - Towner U15** Combines a larger size, straight blade jacquette that has a 1.0 mm blade width that tapers to a point with a long-reach Towner U15 sickle that has a blade width of 1 mm that tapers to a point. Also known as the U15-33.

Handle Selection:	CENSJ1S-U15	RENSJ1S-U15	VSCJ1S-U15	*Complimentary Sharpening Offered
CЕСCJ1S-U15 (shown)	RESCJ1S-U15	ESCJ1S-U15	ESCJ1S-U15	OPPJ1S-U15

**HANDLE SYMBOL KEY:** XDURA DuraLite ColorRings XDURA DuraLite Round Reliant  
 DuraLite ColorRings DuraLite Round DuraLite Hex Medium Round OnPoint

# POSTERIOR SCALERS

Posterior scalers are used to remove deposits from supragingival surfaces of posterior teeth. There are two basic design classifications for posterior scalers. They are Jacquette scalers (straight blade that tapers to a point) and sickle scalers (curved blade that tapers to a point). In this section you will find a wide assortment of standard and unique posterior scalers for every application.

## Jacquettes



**Jacquette #2-3** Mirror image Jacquette. Both blades are 5 mm long and have a blade width of 1 mm. Also known as the #31-32.

Handle Selection:	<input checked="" type="radio"/> N/A	<input checked="" type="radio"/> N/A	<input checked="" type="radio"/> VSCJ2-3	*Complimentary Sharpening Offered
<input checked="" type="radio"/> CESCJ2-3 (shown)	<input type="radio"/> RESCJ2-3	<input type="radio"/> ESCJ2-3	<input type="radio"/> RSCJ2-3	<input type="radio"/> N/A



**Jacquette #2S-3S** Mirror image Jacquette. Both blades are 4 mm long and have a blade width of 0.9 mm. Also known as the #34-35.

Handle Selection:	<input checked="" type="radio"/> CENSJ2S-3S	<input checked="" type="radio"/> RENSJ2S-3S	<input checked="" type="radio"/> VSCJ2S-3S	*Complimentary Sharpening Offered
<input checked="" type="radio"/> CESCJ2S-3S (shown)	<input type="radio"/> RESCJ2S-3S	<input type="radio"/> ESCJ2S-3S	<input type="radio"/> RSCJ2S-3S	<input type="radio"/> OPPJ2S-3S

## Sickles



**Sickle #157-158** Mirror image blades on a long-reach terminal shank that is set at 40° to the handle. The blades have a reach of 5 mm and a width of 0.8 mm.

Handle Selection:	<input checked="" type="radio"/> CENS157-158	<input checked="" type="radio"/> RENS157-158	<input checked="" type="radio"/> VSC157-158	*Complimentary Sharpening Offered
<input checked="" type="radio"/> CESC157-158 (shown)	<input type="radio"/> RESC157-158	<input type="radio"/> ESC157-158	<input type="radio"/> RSC157-158	<input type="radio"/> OPP157-158



**Sickle #204** Mirror image blades on a long-reach terminal shank that is set at 30° to the handle. The blades have a reach of 5.5 mm and a width of 1.1 mm.

Handle Selection:	<input checked="" type="radio"/> CENS204	<input checked="" type="radio"/> RENS204	<input checked="" type="radio"/> VSC204	*Complimentary Sharpening Offered
<input checked="" type="radio"/> CESC204 (shown)	<input type="radio"/> RESC204	<input type="radio"/> ESC204	<input type="radio"/> RSC204	<input type="radio"/> OPP204



**Sickle #204 "Indiana University-Fort Wayne"** Mirror image blades on a long-reach terminal shank that is set at 30° to the handle. The blades have a reach of 5.5 mm and a width of 0.9 mm.

Handle Selection:	<input checked="" type="radio"/> CENS204IUFW	<input checked="" type="radio"/> RENS204IUFW	<input checked="" type="radio"/> VSC204IUFW	*Complimentary Sharpening Offered
<input checked="" type="radio"/> CESC204IUFW (shown)	<input type="radio"/> RESC204IUFW	<input type="radio"/> ESC204IUFW	<input type="radio"/> RSC204IUFW	<input type="radio"/> OPP204IUFW

## Sickles Cont.



**Sickle #204S** Mirror image blades on a short-reach terminal shank that is set at 40° to the handle. The blades have a reach of 4.5 mm and a width of 0.9 mm.

Handle Selection:	CENS204S	RENS204S	VSC204S	*Complimentary Sharpening Offered
	CESC204S (shown)	RESC204S	ESC204S	RSC204S
				OPP204S



**Sickle #204SD "Distal"** Mirror image blades on a short-reach terminal shank that is set at 25° to the handle. The blades have a reach of 4.5 mm and a width of 0.9 mm.

Handle Selection:	CENS204SD	RENS204SD	VSC204SD	*Complimentary Sharpening Offered
	CESC204SD (shown)	RESC204SD	ESC204SD	RSC204SD
				OPP204SD



**Nordent #129 Anterior / Posterior Sickle** Mirror image blades on a medium-reach terminal shank. The blades taper to a point from a 0.8 mm width and have a reach of 10 mm.

Handle Selection:	CENS129	RENS129	VSC129	*Complimentary Sharpening Offered
	CESC129 (shown)	RESC129	ESC129	RSC129
				OPP129

### Adapting the Nordent #129

The unique bends of the N129 allow for astonishingly easy adaptation to any area with minimal adjustment. The long slender sickle blade makes interproximal insertion easy for you and more comfortable for the patient. Another example of a unique Nordent innovation.



**HANDLE SYMBOL KEY:** XDURA DuraLite ColorRings    XDURA DuraLite Round    Reliant  
 DuraLite ColorRings    DuraLite Round    DuraLite Hex    Medium Round    OnPoint

## Sickles Cont.



**Remington #3-4 Anterior / Posterior Sickle** Mirror image blades on a long-reach terminal shank. The blades taper to a point from a 1.1 mm width and have a reach of 13 mm.

Handle Selection:	CENSRE3-4	RENSRE3-4	VSCRE3-4	*Complimentary Sharpening Offered
	CESCRES3-4 (shown)	RESCRES3-4	ESCRES3-4	RSCRES3-4
				OPPRES3-4



**Remington K** Mirror image blades on a medium-reach terminal shank that is set at 30° to the handle. The blades have a very gentle curvature and a width of 0.8 mm.

Handle Selection:	CENSREK	RENSREK	VSCREK	*Complimentary Sharpening Offered
	CESCRESK (shown)	RESCRESK	ESCRESK	RSCRESK
				OPPRESK



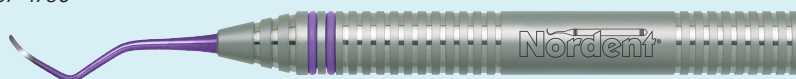
**Sickle Doeppler #M-23** Mirror image blades on a medium-reach terminal shank that is set at 25° to the handle. The blades have a reach of 4 mm and a width of 1 mm.

Handle Selection:	CENS130	RENS130	VSCN130	*Complimentary Sharpening Offered
	CESC130 (shown)	RESC130	ESCN130	RSCN130
				OPPN130

### Unbeatable Support

At Nordent, supporting you is our priority which is why live customer service is available by phone or email. When you contact Nordent, you'll speak with a knowledgeable and welcoming representative that will go above and beyond to meet your needs.

- Call us at 800-966-7336 for US & Canada or 847-437-4780
- Email us at [customerservice@nordent.com](mailto:customerservice@nordent.com)
- [www.nordent.com](http://www.nordent.com)



<b>HANDLE SYMBOL KEY:</b>	XDURA DuraLite ColorRings	XDURA DuraLite Round	Reliant
	DuraLite ColorRings	DuraLite Round	DuraLite Hex
		Medium Round	OnPoint

## Sickles Cont.



**Offset Universal #2** Mirror image blades that taper to a point from a 0.8 mm width. The terminal shank is offset 60° from centerline and has a 10 mm reach.

Handle Selection:	<input checked="" type="radio"/> CENS2	<input checked="" type="radio"/> RENS2	<input checked="" type="radio"/> VSCN2	*Complimentary Sharpening Offered
	<input type="radio"/> CESC2 (shown)	<input type="radio"/> RESCN2	<input type="radio"/> ESCN2	<input type="radio"/> RSCN2
				<input type="radio"/> OPPN2



**University of Texas #107-108** Mirror image blades that taper to a point from a 1 mm width. The terminal shank is set at 40° to the handle with a reach of 13 mm.

Handle Selection:	<input checked="" type="radio"/> N/A	<input checked="" type="radio"/> N/A	<input checked="" type="radio"/> VSCUT107-108	*Complimentary Sharpening Offered
	<input type="radio"/> CESCUT107-108 (shown)	<input type="radio"/> RESCUT107-108	<input type="radio"/> ESCUT107-108	<input type="radio"/> RSCUT107-108
				<input type="radio"/> N/A



**Taylor #2-3** Mirror image blades that taper to a point from a 1.5 mm width. The terminal shank reach is 11 mm and is set at 40° to the handle.

Handle Selection:	<input checked="" type="radio"/> N/A	<input checked="" type="radio"/> N/A	<input checked="" type="radio"/> VSC2A2-3	*Complimentary Sharpening Offered
	<input type="radio"/> CESC2A2-3 (shown)	<input type="radio"/> RESC2A2-3	<input type="radio"/> ESC2A2-3	<input type="radio"/> RSC2A2-3
				<input type="radio"/> N/A



**Ivory #2-3** Mirror image blades that taper to a point from a 2 mm width. The terminal shank is set at 32° to the handle with a reach of 13 mm.

Handle Selection:	<input checked="" type="radio"/> N/A	<input checked="" type="radio"/> N/A	<input checked="" type="radio"/> VSCC2-3	*Complimentary Sharpening Offered
	<input type="radio"/> CESC2-3 (shown)	<input type="radio"/> RESC2-3	<input type="radio"/> ESCC2-3	<input type="radio"/> RSCC2-3
				<input type="radio"/> N/A



**Crane Kaplan #6** Mirror image blades that taper to a point from a 2 mm width. The terminal shank is set at 35° to the handle with a reach of 15 mm.

Handle Selection:	<input checked="" type="radio"/> N/A	<input checked="" type="radio"/> N/A	<input checked="" type="radio"/> VSCCK6	*Complimentary Sharpening Offered
	<input type="radio"/> CESCCK6 (shown)	<input type="radio"/> RESCCK6	<input type="radio"/> ESCCK6	<input type="radio"/> RSCCK6
				<input type="radio"/> N/A

**HANDLE SYMBOL KEY:**  XDURA DuraLite ColorRings     XDURA DuraLite Round     Relyant  
 DuraLite ColorRings     DuraLite Round     DuraLite Hex     Medium Round     OnPoint

# SCALETTE®

Nordent was the first instrument manufacturer to develop a series of hygiene instruments that combine the design characteristics of a scaler and a curette into one easier-to-use instrument. Using a Nordent Scalette will save time during the procedure, space on the tray and will reduce instrument replacement costs.



## Anterior Scalette N137M

Combines a moderate size, medium-reach sickle that has a blade width of 0.9 mm that tapers to a point with a universal curette that has sharp cutting edges on both sides of the blade and a rounded toe. The curette has a 0.8 mm blade width and a 1mm diameter terminal shank with a 9 mm reach.

Handle Selection:	<input checked="" type="radio"/> CENSN137M	<input checked="" type="radio"/> RENSN137M	<input checked="" type="radio"/> VSCN137M	*Complimentary Sharpening Offered
	<input type="radio"/> CESC137M (shown)	<input type="radio"/> RESCN137M	<input type="radio"/> ESCN137M	<input type="radio"/> RSCN137M
				<input type="radio"/> OPPN137M

## The Nordent #137M

The Anterior Scalette® N137M combines the most popular Sickle Scaler with a universal (double-edged) Anterior Curette that adapts to all anterior surfaces. Saves you time, space on the tray and reduces replacement costs.

Also available with a mini blade and extended terminal shank version N137ML (below).



## Anterior Scalette Long Reach N137ML

Combines a moderate size, medium-reach sickle that has a blade width of 0.9 mm that tapers to a point with a universal curette that has sharp cutting edges on both sides of the blade and a rounded toe. The Long Reach curette has a 0.8 mm blade width and a 1 mm diameter terminal shank with a 12 mm reach.

Handle Selection:	<input checked="" type="radio"/> CENSN137ML	<input checked="" type="radio"/> RENSN137ML	<input checked="" type="radio"/> VSCN137ML	*Complimentary Sharpening Offered
	<input type="radio"/> CESC137ML (shown)	<input type="radio"/> RESCN137ML	<input type="radio"/> ESCN137ML	<input type="radio"/> RSCN137ML
				<input type="radio"/> OPPN137ML



## Posterior Scalette N135

Combines a long-reach shank and a thin curette blade that is pointed like a scaler to provide easy adaptation to both supra and sub-gingival areas and excellent interproximal access. The mirror image tips have a 0.8 mm blade width set on 1 mm terminal shanks with a 12 mm reach.

Handle Selection:	<input checked="" type="radio"/> CENSN135	<input checked="" type="radio"/> RENSN135	<input checked="" type="radio"/> VSCN135	*Complimentary Sharpening Offered
	<input type="radio"/> CESC135 (shown)	<input type="radio"/> RESCN135	<input type="radio"/> ESCN135	<input type="radio"/> RSCN135
				<input type="radio"/> OPPN135

# GOLDMAN-FOX

The Goldman-Fox series of instruments includes universal curettes, Jacquettes, sickles and hoes.



**GF #1 Anterior Jacquette** The blades are 5 mm long and taper to a point from a 1 mm width.

Handle Selection:	<input checked="" type="checkbox"/> N/A	<input checked="" type="checkbox"/> N/A	<input checked="" type="checkbox"/> VSCGF1	*Complimentary Sharpening Offered
<input checked="" type="checkbox"/> CESC GF1 (shown)	<input type="checkbox"/> RESCGF1	<input type="checkbox"/> ESCGF1	<input type="checkbox"/> RSCGF1	<input type="checkbox"/> N/A



**GF #2 Anterior Curette** Designed like a Gracey medium contra-angle with an open blade curve and a rigid shank. The blade is 1.1 mm wide with a round toe.

Handle Selection:	<input checked="" type="checkbox"/> N/A	<input checked="" type="checkbox"/> N/A	<input checked="" type="checkbox"/> VSCGF2	*Complimentary Sharpening Offered
<input checked="" type="checkbox"/> CESC GF2 (shown)	<input type="checkbox"/> RESCGF2	<input type="checkbox"/> ESCGF2	<input type="checkbox"/> RSCGF2	<input type="checkbox"/> N/A



**GF #3 Universal Curette** The terminal shank is 1.1 mm in diameter and 10 mm long. The blade width is 1 mm.

Handle Selection:	<input checked="" type="checkbox"/> N/A	<input checked="" type="checkbox"/> N/A	<input checked="" type="checkbox"/> VSCGF3	*Complimentary Sharpening Offered
<input checked="" type="checkbox"/> CESC GF3 (shown)	<input type="checkbox"/> RESCGF3	<input type="checkbox"/> ESCGF3	<input type="checkbox"/> RSCGF3	<input type="checkbox"/> N/A



**GF #4 Universal Curette** The terminal shank is 1.1 mm in diameter and 12 mm long. The blade width is 1 mm.

Handle Selection:	<input checked="" type="checkbox"/> N/A	<input checked="" type="checkbox"/> N/A	<input checked="" type="checkbox"/> VSCGF4	*Complimentary Sharpening Offered
<input checked="" type="checkbox"/> CESC GF4 (shown)	<input type="checkbox"/> RESCGF4	<input type="checkbox"/> ESCGF4	<input type="checkbox"/> RSCGF4	<input type="checkbox"/> N/A



**GF #5 Hoe** Mirror image hoes that are 1.5 mm wide. For facial and lingual surfaces of posterior teeth.

Handle Selection:	<input checked="" type="checkbox"/> N/A	<input checked="" type="checkbox"/> N/A	<input checked="" type="checkbox"/> VSCGF5	*Complimentary Sharpening Offered
<input checked="" type="checkbox"/> CESC GF5 (shown)	<input type="checkbox"/> RESCGF5	<input type="checkbox"/> ESCGF5	<input type="checkbox"/> RSCGF5	<input type="checkbox"/> N/A

<b>HANDLE SYMBOL KEY:</b>	<input checked="" type="checkbox"/> XDURA DuraLite ColorRings	<input checked="" type="checkbox"/> XDURA DuraLite Round	<input checked="" type="checkbox"/> Relyant
<input checked="" type="checkbox"/> DuraLite ColorRings	<input type="checkbox"/> DuraLite Round	<input type="checkbox"/> DuraLite Hex	<input type="checkbox"/> Medium Round <input type="checkbox"/> OnPoint

## Goldman Fox Cont.



**GF #6 Hoe** The blades are 1.5 mm wide and are well-suited for anterior areas.

Handle Selection:	<input checked="" type="checkbox"/> N/A	<input checked="" type="checkbox"/> N/A	<input checked="" type="checkbox"/> VSCGF6	*Complimentary Sharpening Offered
<input checked="" type="checkbox"/> CESC GF6 (shown)	<input type="checkbox"/> RESCGF6	<input type="checkbox"/> ESCGF6	<input type="checkbox"/> RSCGF6	<input type="checkbox"/> N/A



**GF #21 Anterior Scaler** Combines a small Jacquette that has a 3.5 mm length and a small sickle that has a 1.2 mm blade that tapers to a point.

Handle Selection:	<input checked="" type="checkbox"/> N/A	<input checked="" type="checkbox"/> N/A	<input checked="" type="checkbox"/> VSCGF21	*Complimentary Sharpening Offered
<input checked="" type="checkbox"/> CESC GF21 (shown)	<input type="checkbox"/> RESCGF21	<input type="checkbox"/> ESCGF21	<input type="checkbox"/> RSCGF21	<input type="checkbox"/> N/A

### Nordent Tip

When sharpening, it is important to maintain original factory blade angles for optimum results. The closer you can match the original factory angles, the longer the blade will retain sharpness. Proper sharpening techniques will eliminate the need to re-sharpen blades during a procedure and reduce the hazard of sharpening a "dirty" instrument.

To simplify the sharpening process and achieve professional results every time, Nordent developed the **InstRenew® Sharpening Assistant** as an easy and cost-effective way to restore the perfect factory sharpness of every brand and every pattern of scalers and currettes on the market. Learn more about InstRenew at [nordent.com](http://nordent.com).

## CURETTES

### Barnhart

Barnhart currettes have universal blades that have sharp cutting edges on both sides of the blade and a rounded toe. The terminal shanks of Barnhart currettes are long and slender.



**Barnhart #1-2** The terminal shank is 1 mm in diameter and 16 mm long with a blade width of 0.8 mm.

Handle Selection:	<input checked="" type="checkbox"/> CENSBH1-2	<input checked="" type="checkbox"/> RENSBH1-2	<input checked="" type="checkbox"/> VSCBH1-2	*Complimentary Sharpening Offered
<input checked="" type="checkbox"/> CESC BH1-2 (shown)	<input type="checkbox"/> RESCBH1-2	<input type="checkbox"/> ESCBH1-2	<input type="checkbox"/> RSCBH1-2	<input type="checkbox"/> OPPBH1-2



**Barnhart #5-6** The terminal shank is 1 mm in diameter and 10 mm long with a blade width of 0.8 mm.

Handle Selection:	<input checked="" type="checkbox"/> CENSBH5-6	<input checked="" type="checkbox"/> RENSBH5-6	<input checked="" type="checkbox"/> VSCBH5-6	*Complimentary Sharpening Offered
<input checked="" type="checkbox"/> CESC BH5-6 (shown)	<input type="checkbox"/> RESCBH5-6	<input type="checkbox"/> ESCBH5-6	<input type="checkbox"/> RSCBH5-6	<input type="checkbox"/> OPPBH5-6

## Barnhart Cont.



**Barnhart #5S-6S** Modified Barnhart 5-6 with slender blades. The terminal shank is 10 mm long with a blade width of 0.7 mm.

Handle Selection:	CENSBH5S-6S	RENSBH5S-6S	VSCBH5S-6S	*Complimentary Sharpening Offered
CESC BH5S-6S (shown)	RESCBH5S-6S	ESCBH5S-6S	RSCBH5S-6S	OPPBH5S-6S



**Barnhart #5R-6R** Modified Barnhart 5-6 with a rigid terminal shank. The terminal shank is 1.2 mm in diameter and 10 mm long with a blade width of 0.9 mm.

Handle Selection:	N/A	N/A	VSCBH5R-6R	*Complimentary Sharpening Offered
CESC BH5R-6R (shown)	RESCBH5R-6R	ESCBH5R-6R	RSCBH5R-6R	N/A

## Columbia

Columbia curettes have universal blades that have sharp cutting edges on both sides of the blade and a rounded toe.



**Columbia #13-14** The terminal shank is 1 mm in diameter and 8 mm long with a blade width of 0.9 mm.

Handle Selection:	CENSCO13-14	RENSCO13-14	VSCCO13-14	*Complimentary Sharpening Offered
CESCO13-14 (shown)	RESCCO13-14	ESCCO13-14	RSCCO13-14	OPPCO13-14



**Columbia #2R-2L** The terminal shank is 1.2 mm in diameter and 14 mm long with an elliptical blade shape that is 1.2 mm wide.

Handle Selection:	CENSCO2R-2L	RENSCO2R-2L	VSCCO2R-2L	*Complimentary Sharpening Offered
CESCO2R-2L (shown)	RESCCO2R-2L	ESCCO2R-2L	RSCCO2R-2L	OPPCO2R-2L



**Columbia #4R-4L** The terminal shank is 1.1 mm in diameter and 12 mm long with an elliptical blade shape that is 1.2 mm wide.

Handle Selection:	CENSCO4R-4L	RENSCO4R-4L	VSCCO4R-4L	*Complimentary Sharpening Offered
CESCO4R-4L (shown)	RESCCO4R-4L	ESCCO4R-4L	RSCCO4R-4L	OPPCO4R-4L

<b>HANDLE SYMBOL KEY:</b>	XDURA DuraLite ColorRings	XDURA DuraLite Round	Reliant
DuraLite ColorRings	DuraLite Round	DuraLite Hex	Medium Round  OnPoint

## Langer

Langer curettes have shank angles like Gracey curettes. The blades are universal so they have sharp cutting edges on both sides of the blade with a rounded toe and are set at a 90° angle to the terminal shank.



**Langer #1-2** Has bends similar to the Gracey 11-12. The terminal shank is 1 mm in diameter and 9 mm long with a blade width of 0.9 mm.

Handle Selection:	<input checked="" type="radio"/> CENSLN1-2	<input checked="" type="radio"/> RENSLN1-2	<input checked="" type="radio"/> VSLCN1-2	*Complimentary Sharpening Offered
<input checked="" type="radio"/> CESCLN1-2 (shown)	<input type="radio"/> RESCLN1-2	<input type="radio"/> ESCLN1-2	<input type="radio"/> RSLCN1-2	<input type="radio"/> OPPLN1-2



**Langer #3-4** Has bends similar to the Gracey 13-14. The terminal shank is 1 mm in diameter and 9 mm long with a blade width of 0.9 mm.

Handle Selection:	<input checked="" type="radio"/> CENSLN3-4	<input checked="" type="radio"/> RENSLN3-4	<input checked="" type="radio"/> VSLCN3-4	*Complimentary Sharpening Offered
<input checked="" type="radio"/> CESCLN3-4 (shown)	<input type="radio"/> RESCLN3-4	<input type="radio"/> ESCLN3-4	<input type="radio"/> RSLCN3-4	<input type="radio"/> OPPLN3-4



**Langer #5-6** Has bends similar to the Gracey 7-8. The terminal shank is 1 mm in diameter and 16 mm long with a blade width of 0.9 mm.

Handle Selection:	<input checked="" type="radio"/> CENSLN5-6	<input checked="" type="radio"/> RENSLN5-6	<input checked="" type="radio"/> VSLCN5-6	*Complimentary Sharpening Offered
<input checked="" type="radio"/> CESCLN5-6 (shown)	<input type="radio"/> RESCLN5-6	<input type="radio"/> ESCLN5-6	<input type="radio"/> RSLCN5-6	<input type="radio"/> OPPLN5-6



**Langer #17-18** Has bends similar to the Gracey 17-18. The terminal shank is 1 mm in diameter and 11 mm long with a blade width of 0.9 mm.

Handle Selection:	<input checked="" type="radio"/> CENSLN17-18	<input checked="" type="radio"/> RENSLN17-18	<input checked="" type="radio"/> VSLCN17-18	*Complimentary Sharpening Offered
<input checked="" type="radio"/> CESCLN17-18 (shown)	<input type="radio"/> RESCLN17-18	<input type="radio"/> ESCLN17-18	<input type="radio"/> RSLCN17-18	<input type="radio"/> OPPLN17-18

## University of California



**Ratcliff #3-4** Mirror image universal curette with 0.7 mm blade width, a terminal shank set at 45° to the handle and a 10 mm reach.

Handle Selection:	<input checked="" type="radio"/> CENSR3-4R	<input checked="" type="radio"/> RENSR3-4R	<input checked="" type="radio"/> VSCR3-4R	*Complimentary Sharpening Offered
<input checked="" type="radio"/> CESCR3-4R (shown)	<input type="radio"/> RESCR3-4R	<input type="radio"/> ESCR3-4R	<input type="radio"/> RSCR3-4R	<input type="radio"/> OPPR3-4R

<b>HANDLE SYMBOL KEY:</b>	<input checked="" type="radio"/> XDURA DuraLite ColorRings	<input checked="" type="radio"/> XDURA DuraLite Round	<input checked="" type="radio"/> Relyant
<input checked="" type="radio"/> DuraLite ColorRings	<input type="radio"/> DuraLite Round	<input type="radio"/> DuraLite Hex	<input type="radio"/> Medium Round
			<input type="radio"/> OnPoint



**Rule #3-4** Mirror image universal curette with 0.8 mm blade width, a terminal shank set at 47° to the handle and a 10 mm reach.

Handle Selection:	<input checked="" type="radio"/> CENSUC3-4	<input checked="" type="radio"/> RENSUC3-4	<input checked="" type="radio"/> VSCUC3-4	*Complimentary Sharpening Offered	
	<input checked="" type="radio"/> CESCUC3-4 (shown)	<input type="radio"/> RESCUC3-4	<input type="radio"/> ESCUC3-4	<input type="radio"/> RSCUC3-4	<input type="radio"/> OPPUC3-4

## Indiana University



**IU #13-14** The terminal shanks are 1.1 mm in diameter and 13 mm long. The blades are 1.1 mm wide and have a gentle curve that tapers to a point.

Handle Selection:	<input checked="" type="radio"/> CENSIU13-14	<input checked="" type="radio"/> RENSIU13-14	<input checked="" type="radio"/> VSCIU13-14	*Complimentary Sharpening Offered	
	<input checked="" type="radio"/> CESCUI13-14 (shown)	<input type="radio"/> RESCIU13-14	<input type="radio"/> ESCIU13-14	<input type="radio"/> RSCIU13-14	<input type="radio"/> OPPIU13-14



**IU #17-18** The shank curvature adapts easily to 2nd and 3rd molars. The blades have a rounded toe and are 1 mm wide.

Handle Selection:	<input checked="" type="radio"/> CENSIU17-18	<input checked="" type="radio"/> RENSIU17-18	<input checked="" type="radio"/> VSCIU17-18	*Complimentary Sharpening Offered	
	<input checked="" type="radio"/> CESCUI17-18 (shown)	<input type="radio"/> RESCIU17-18	<input type="radio"/> ESCIU17-18	<input type="radio"/> RSCIU17-18	<input type="radio"/> OPPIU17-18

## McCall

McCall curettes have universal blades that have sharp cutting edges on both sides of the blade.



**McCall #13-14** The terminal shanks are 1.1 mm in diameter and 9 mm long with an elliptical blade shape with a rounded toe that is 1.2 mm wide.

Handle Selection:	<input checked="" type="radio"/> CENSMC13-14	<input checked="" type="radio"/> RENSMC13-14	<input checked="" type="radio"/> VSCMC13-14	*Complimentary Sharpening Offered	
	<input checked="" type="radio"/> CESCMC13-14 (shown)	<input type="radio"/> RESCMC13-14	<input type="radio"/> ESCMC13-14	<input type="radio"/> RSCMC13-14	<input type="radio"/> OPPMC13-14



**McCall #13S-14S** The terminal shank is 1.1 mm in diameter and 9 mm long with a pointed blade shape that is 1 mm wide.

Handle Selection:	<input checked="" type="radio"/> CENSM13S-14S	<input checked="" type="radio"/> RENSM13S-14S	<input checked="" type="radio"/> VSCM13S-14S	*Complimentary Sharpening Offered	
	<input checked="" type="radio"/> CESC13S-14S (shown)	<input type="radio"/> RESCM13S-14S	<input type="radio"/> ESCM13S-14S	<input type="radio"/> RSCM13S-14S	<input type="radio"/> OPPM13S-14S

<b>HANDLE SYMBOL KEY:</b>	<input checked="" type="radio"/> XDURA DuraLite ColorRings	<input checked="" type="radio"/> XDURA DuraLite Round	<input checked="" type="radio"/> Relyant
	<input checked="" type="radio"/> DuraLite ColorRings	<input type="radio"/> DuraLite Round	<input type="radio"/> OnPoint
	<input type="radio"/> DuraLite Hex	<input type="radio"/> Medium Round	

## McCall Cont.



**McCall #17-18** The shank curvature adapts easily to 2nd and 3rd molars. The elliptical blade shape has a rounded toe and is 1.2 mm wide.

Handle Selection:	CENSMC17-18	RENSMC17-18	VSCMC17-18	*Complimentary Sharpening Offered
CESCO17-18 (shown)	RESCMC17-18	ESCMC17-18	RSCMC17-18	OPPMC17-18



**McCall #17S-18S** The shank curvature adapts easily to 2nd and 3rd molars. The straight-sided universal blade has a rounded toe and is 1 mm wide.

Handle Selection:	CENSM17S-18S	RENSM17S-18S	VSCM17S-18S	*Complimentary Sharpening Offered
CESCO17S-18S (shown)	RESCM17S-18S	ESCM17S-18S	RSCM17S-18S	OPPM17S-18S

## Additional Universal Curettes



**Younger-Good #7-8** The shank curvature adapts easily to 2nd and 3rd molars. The elliptical blade shape has a rounded toe and is 1 mm wide.

Handle Selection:	CENSYG7-8	RENSYG7-8	VSCYG7-8	*Complimentary Sharpening Offered
CESCOYG7-8 (shown)	RESCYG7-8	ESCYG7-8	RSCYG7-8	OPPYG7-8



**#31-32 Curette** The terminal shank is 1 mm in diameter and 9 mm long. The blade is 0.8 mm wide with a rounded toe.

Handle Selection:	CENSG31-32	RENSG31-32	VSCG31-32	*Complimentary Sharpening Offered
CESCOG31-32 (shown)	RESCG31-32	ESCG31-32	RSCG31-32	OPPG31-32

## Instrument Care

Nordent® uses many different types of stainless steels in the production of instruments dependent upon the design and application of the instrument. All stainless steels have a high nickel and chromium content to maximize corrosion resistance but will corrode and discolor when subjected to high concentrations of certain chemicals. Never expose stainless steel instruments to products that are not specifically formulated for use with dental instruments or for the purpose of cleaning and sterilizing dental instruments.

Nordent Stainless Steel Instruments can be sterilized by any recognized acceptable method of sterilization including: Steam Autoclave, Chemical Vapor, Dry Heat, Ethylene Oxide

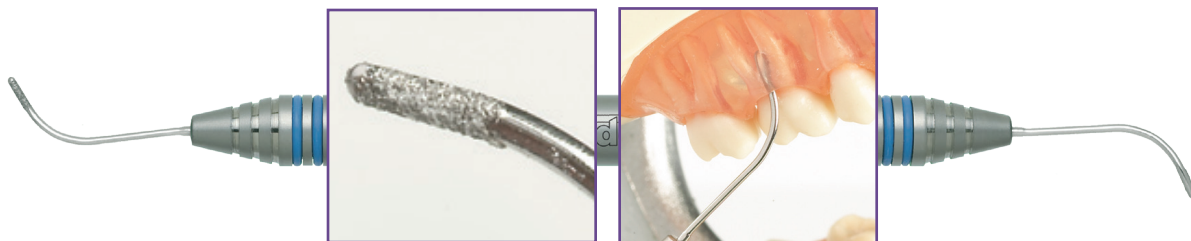
**Never exceed temperatures 350° F / 177° C as this will have an adverse effect on the temper of the steel.**

**HANDLE SYMBOL KEY:**

XDURA DuraLite ColorRings	XDURA DuraLite Round	Relyant
DuraLite ColorRings	DuraLite Round	DuraLite Hex
Medium Round	OnPoint	

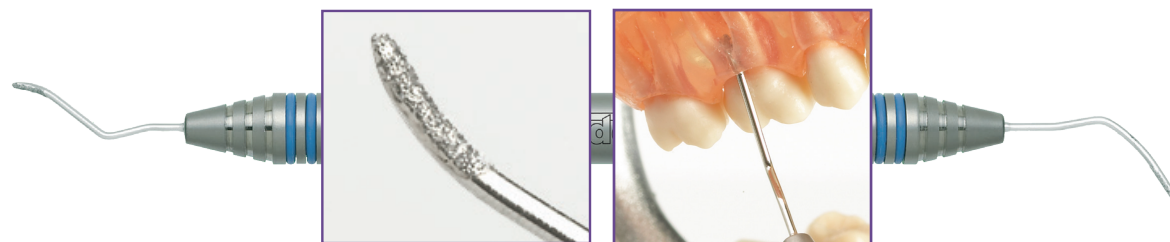
# DIAMOND FURCATION FILES

Diamond-coated furcation files have a thin profile for easy sub-gingival access. The tips are made from a special spring tempered stainless steel that resists breakage. The blades have a fine diamond coating on the inside curvature that is used to remove calculus and a smooth, uncoated back to protect soft tissue. The cutting action of the diamond coating allows a multidirectional stroke pattern.




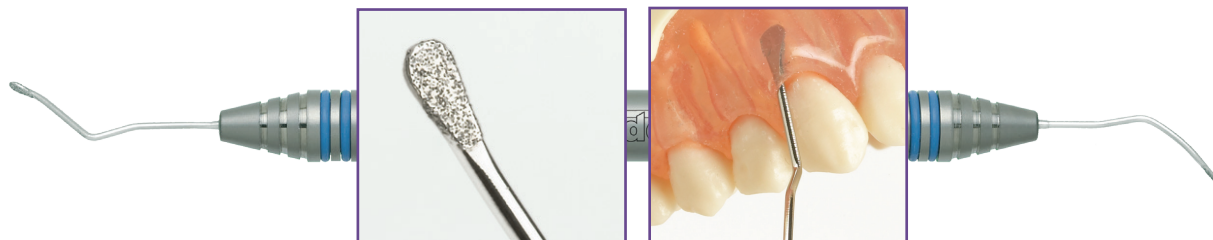
**Diamond File #1** Mirror image tips for facial and lingual adaptation. The blade has a round shape and is 1.0 mm in diameter.

Handle Selection:  CEDF1 (shown)



**Diamond File #2** The blades are set at opposing angles and have a round shape that is 1.0 mm in diameter set on a 14 mm terminal shank. Excellent for mesial and distal adaptation.

Handle Selection:  CEDF2 (shown)



**Diamond File #3** Designed to cover a wider area in tight mesial and distal areas. The flattened "tear drop" shaped blade is 2 mm wide and 0.5 mm thick. The terminal shank allows a 14 mm reach.

Handle Selection:  CEDF3 (shown)

**Nordent**<sup>®</sup>  
The sharpest name in dentistry.

A passion for premium craftsmanship and industry-leading innovations has transformed Nordent over the last 50 years into the market leader you know today. Behind the sharpest name in dentistry is a team of trusted advisors dedicated to your success and ready to provide you with unbeatable support.



**PREMIUM  
CRAFTSMANSHIP**



**TRUSTED  
ADVISOR**



**UNBEATABLE  
SUPPORT**

# IMPLANT MAINTENANCE

ImplaMate® is the ultimate in implant scaler technology. Recently, clinicians have traditionally relied on a limited selection of instruments with thick plastic tips to clean implants. This is because regular scaler tips made of metals that are dissimilar to titanium (like stainless steel) could scratch the implant and possibly cause rejection. Our series of ImplaMate scalers work safely with implants because they are made with the same material—solid titanium. Even better, ImplaMate scalers are available in a wide range of familiar patterns that are easy to adapt with no “learning curve.” Produced in our DuraLite® ColorRings® handle, ImplaMate implant scalers will also enable your practice to identify and organize implant hygiene set-ups. All tips are color-coded PURPLE for easy identification and to avoid mixing them with stainless scalers and curettes.



## ImplaMate Universal Curette/Langer 1-2

Handle Selection:  CEISLN1-2 (shown)



## ImplaMate Universal Curette/Langer 3-4

Handle Selection:  CEISLN3-4 (shown)




## ImplaMate Universal Curette/Langer 5-6

Handle Selection:  CEISLN5-6 (shown)




## ImplaMate Sickle 6-7

Handle Selection:  CEISN67 (shown)



## ImplaMate Posterior Sickle 204S

Handle Selection:  CEIS204S (shown)



## ImplaMate Universal Curette/Barnhart 5-6

Handle Selection:  CEISBH5-6 (shown)



## ImplaMate Anterior Scalette® N137M

Handle Selection:  CEISN137M (shown)

# TRUGRACEY® AND GRACEY CURETTES

Nordent's TruGracey curettes are designed just like Dr. Gracey intended them to be. Using Nordent TruGracey curettes will reduce tissue trauma, minimize lateral pressure and reduce the number of strokes required during a procedure.

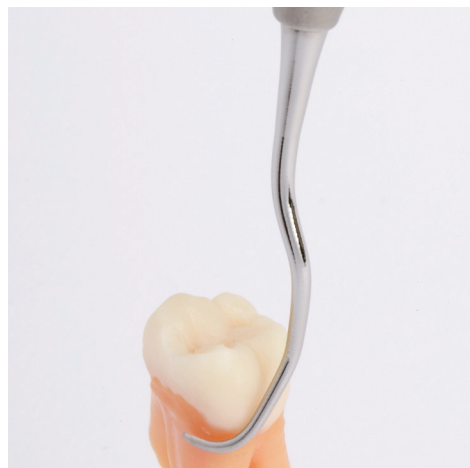
## TruGracey Patterns

### TruGracey Standard

Standard terminal shank and blade.

### TruGracey Long ("L" suffix)

The terminal shank is 3 mm longer than the standard TruGracey with a standard blade. For improved access in deep periodontal pockets.



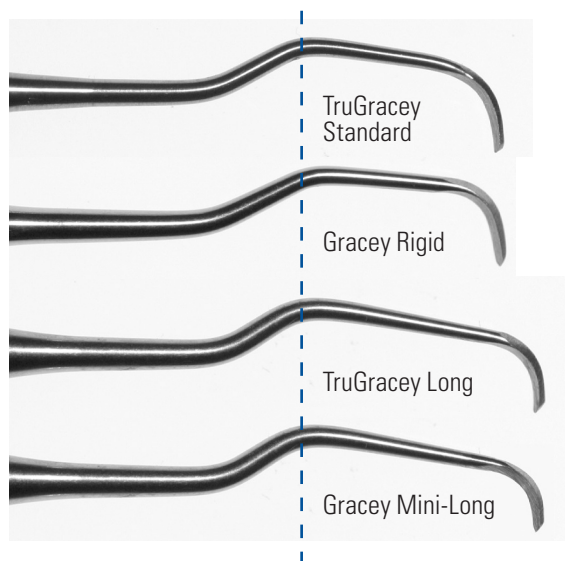
## Gracey Patterns

### Rigid ("R" suffix)

"Rigid" terminal shank with a slightly longer and wider blade than a standard Gracey. A good choice for periodontal surgery.

### Mini-Long ("ML" suffix)

The terminal shank is 3 mm longer than the standard TruGracey with a shorter and narrower "mini" blade. Excellent for periodontal maintenance in deep pockets.






## Gracey Application Chart

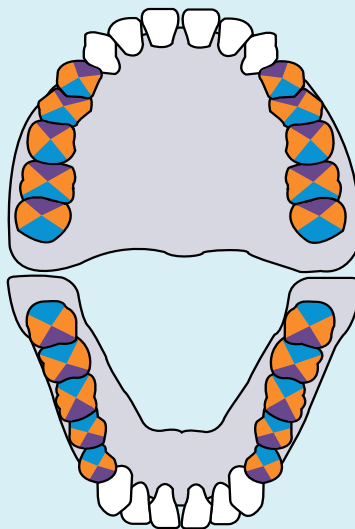
Use this color-coded chart to select the correct Gracey patterns for your application.

### Anteriors

-  All Surfaces  
Gracey Patterns 1-2, 3-4 or 5-6

### Premolars and Molars

-  Buccal & Lingual Surfaces  
Gracey Patterns 7-8 or 9-10
-  Mesial Surfaces  
Gracey Patterns 11-12 or 15-16
-  Distal Surfaces  
Gracey Patterns 13-14 or 17-18



# TRUGRACEY® CURETTES

Nordent TruGracey curettes feature a blade face curve with a true radius that conforms to tooth anatomy better than any other brand. This means that Nordent TruGracey curettes are easier to adapt, require fewer strokes, and reduce tissue trauma better than any other brand. Nordent TruGracey curettes have a 1.1 mm terminal shank diameter and blades that are 0.9 mm wide and 4 mm long.



**TruGracey #1-2** Short contra-angle for incisors and cuspids. Terminal shank reach is 11 mm.

Handle Selection:	<input checked="" type="radio"/> CENSGR1-2	<input checked="" type="radio"/> RENSGR1-2	<input checked="" type="radio"/> VSCGR1-2	*Complimentary Sharpening Offered
<input checked="" type="radio"/> CESCGR1-2 (shown)	<input type="radio"/> RESCGR1-2	<input type="radio"/> ESCGR1-2	<input type="radio"/> RSCGR1-2	<input type="radio"/> OPPGR1-2



**TruGracey #3-4** Short contra-angle for incisors and cuspids. Terminal shank reach is 11 mm.

Handle Selection:	<input checked="" type="radio"/> CENSGR3-4	<input checked="" type="radio"/> RENSGR3-4	<input checked="" type="radio"/> VSCGR3-4	*Complimentary Sharpening Offered
<input checked="" type="radio"/> CESCGR3-4 (shown)	<input type="radio"/> RESCGR3-4	<input type="radio"/> ESCGR3-4	<input type="radio"/> RSCGR3-4	<input type="radio"/> OPPGR3-4



**TruGracey #5-6** Medium shank and slight contra-angle for bicuspid and molars. Terminal shank reach is 14 mm.

Handle Selection:	<input checked="" type="radio"/> CENSGR5-6	<input checked="" type="radio"/> RENSGR5-6	<input checked="" type="radio"/> VSCGR5-6	*Complimentary Sharpening Offered
<input checked="" type="radio"/> CESCGR5-6 (shown)	<input type="radio"/> RESCGR5-6	<input type="radio"/> ESCGR5-6	<input type="radio"/> RSCGR5-6	<input type="radio"/> OPPGR5-6



**TruGracey #7-8** Medium contra-angle for facial and lingual surfaces of bicuspid and molars. Terminal shank reach is 12 mm.

Handle Selection:	<input checked="" type="radio"/> CENSGR7-8	<input checked="" type="radio"/> RENSGR7-8	<input checked="" type="radio"/> VSCGR7-8	*Complimentary Sharpening Offered
<input checked="" type="radio"/> CESCGR7-8 (shown)	<input type="radio"/> RESCGR7-8	<input type="radio"/> ESCGR7-8	<input type="radio"/> RSCGR7-8	<input type="radio"/> OPPGR7-8



**TruGracey #9-10** Long contra-angle for molars and less accessible root surfaces. Terminal shank reach is 12 mm.

Handle Selection:	<input checked="" type="radio"/> CENSGR9-10	<input checked="" type="radio"/> RENSGR9-10	<input checked="" type="radio"/> VSCGR9-10	*Complimentary Sharpening Offered
<input checked="" type="radio"/> CESCGR9-10 (shown)	<input type="radio"/> RESCGR9-10	<input type="radio"/> ESCGR9-10	<input type="radio"/> RSCGR9-10	<input type="radio"/> OPPGR9-10

## Nordent Tip

Gracey curettes are also known as "Area Specific Curettes." All Gracey's have one cutting edge on the lower side of the blade and a rounded toe. When re-sharpening a Gracey blade, sharpen the lower edge and the toe only.

A complete set of Gracey curettes would include one for anteriors, one for the buccal and lingual surfaces of pre-molars and molars, one for the mesial surfaces of pre-molars and molars, and one for the distal surfaces of premolars and molars.

TruGracey® Cont.



**TruGracey #11-12** All mesial surfaces of bicuspid and molars. Terminal shank reach is 8 mm.

Handle Selection:	⊗ CENSGR11-12	⊗ RENSGR11-12	Ⓜ VSCGR11-12	*Complimentary Sharpening Offered
⊗ CESCGR11-12 (shown)	○ RESCGR11-12	⬡ ESCGR11-12	● RSCGR11-12	△ OPPGR11-12



**TruGracey #13-14** All distal surfaces of bicuspid and molars. Terminal shank reach is 9 mm.

Handle Selection:	⊗ CENSGR13-14	⊗ RENSGR13-14	Ⓜ VSCGR13-14	*Complimentary Sharpening Offered
⊗ CESCGR13-14 (shown)	○ RESCGR13-14	⬡ ESCGR13-14	● RSCGR13-14	△ OPPGR13-14



**TruGracey #11-14** Mesial Distal Combination combines the mesial tip of the TruGracey 11 and the distal TruGracey 14 tip to allow completion of the facial or lingual sextant without changing instruments.

Handle Selection:	⊗ CENSGR11-14	⊗ RENSGR11-14	Ⓜ VSCGR11-14	*Complimentary Sharpening Offered
⊗ CESCGR11-14 (shown)	○ RESCGR11-14	⬡ ESCGR11-14	● RSCGR11-14	△ OPPGR11-14



**TruGracey #12-13** Mesial Distal Combination combines the mesial tip of the TruGracey 12 and the distal TruGracey 13 tip to allow completion of the facial or lingual sextant without changing instruments.

Handle Selection:	⊗ CENSGR12-13	⊗ RENSGR12-13	Ⓜ VSCGR12-13	*Complimentary Sharpening Offered
⊗ CESCGR12-13 (shown)	○ RESCGR12-13	⬡ ESCGR12-13	● RSCGR12-13	△ OPPGR12-13



**TruGracey #15-16** Modified version of the TruGracey 11-12 allows better access and a more comfortable hand and finger position for all mesial surfaces of bicuspid and molars. The terminal shank reach is 9 mm.

Handle Selection:	⊗ CENSGR15-16	⊗ RENSGR15-16	Ⓜ VSCGR15-16	*Complimentary Sharpening Offered
⊗ CESCGR15-16 (shown)	○ RESCGR15-16	⬡ ESCGR15-16	● RSCGR15-16	△ OPPGR15-16

**HANDLE SYMBOL KEY:**

⊗	XDURA DuraLite ColorRings	⊗	XDURA DuraLite Round	Ⓜ	Relyant
⊗	DuraLite ColorRings	○	DuraLite Round	⬡	DuraLite Hex
		●	Medium Round	△	OnPoint

## TruGracey Currettes Cont.



**TruGracey #17-18** Modified version of the Gracey 13-14 allows better access and a more comfortable hand and finger position for all distal surfaces of bicuspid and molars. The terminal shank reach is 7 mm.

Handle Selection:	<input checked="" type="radio"/> CENSGR17-18	<input checked="" type="radio"/> RENSGR17-18	<input checked="" type="radio"/> VSCGR17-18	*Complimentary Sharpening Offered
	<input type="radio"/> CESCGR17-18 (shown)	<input type="radio"/> RESCGR17-18	<input type="radio"/> ESCGR17-18	<input type="radio"/> RSCGR17-18
				<input type="radio"/> OPPGR17-18

## Long Reach TruGracey

Nordent long reach TruGracey curettes have an extended terminal shank that is 3 mm longer than standard. They feature our standard blade face curve with a true radius that conforms to tooth anatomy better than any other brand. This means that Nordent standard TruGracey curettes are easier to adapt, require fewer strokes, and reduce tissue trauma better than any other brand. Nordent standard Gracey curettes have a 1.1 mm terminal shank diameter and blades that are 0.9 mm wide and 4 mm long.



**Long Reach TruGracey #1-2** Short contra-angle for incisors and cuspids.

Handle Selection:	<input checked="" type="radio"/> CENSGR1-2L	<input checked="" type="radio"/> RENSGR1-2L	<input checked="" type="radio"/> VSCGR1-2L	*Complimentary Sharpening Offered
	<input type="radio"/> CESCGR1-2L (shown)	<input type="radio"/> RESCGR1-2L	<input type="radio"/> ESCGR1-2L	<input type="radio"/> RSCGR1-2L
				<input type="radio"/> OPPGR1-2L



**Long Reach TruGracey #3-4** Short contra-angle for incisors and cuspids.

Handle Selection:	<input checked="" type="radio"/> CENSGR3-4L	<input checked="" type="radio"/> RENSGR3-4L	<input checked="" type="radio"/> VSCGR3-4L	*Complimentary Sharpening Offered
	<input type="radio"/> CESCGR3-4L (shown)	<input type="radio"/> RESCGR3-4L	<input type="radio"/> ESCGR3-4L	<input type="radio"/> RSCGR3-4L
				<input type="radio"/> OPPGR3-4L



**Long Reach TruGracey #5-6** Medium shank and slight contra-angle for bicuspid and molars.

Handle Selection:	<input checked="" type="radio"/> CENSGR5-6L	<input checked="" type="radio"/> RENSGR5-6L	<input checked="" type="radio"/> VSCGR5-6L	*Complimentary Sharpening Offered
	<input type="radio"/> CESCGR5-6L (shown)	<input type="radio"/> RESCGR5-6L	<input type="radio"/> ESCGR5-6L	<input type="radio"/> RSCGR5-6L
				<input type="radio"/> OPPGR5-6L



**Long Reach TruGracey #7-8** Medium contra-angle for facial and lingual surfaces of bicuspid and molars.

Handle Selection:	<input checked="" type="radio"/> CENSGR7-8L	<input checked="" type="radio"/> RENSGR7-8L	<input checked="" type="radio"/> VSCGR7-8L	*Complimentary Sharpening Offered
	<input type="radio"/> CESCGR7-8L (shown)	<input type="radio"/> RESCGR7-8L	<input type="radio"/> ESCGR7-8L	<input type="radio"/> RSCGR7-8L
				<input type="radio"/> OPPGR7-8L



**Long Reach TruGracey #11-12** All mesial surfaces of bicuspid and molars.

Handle Selection:	<input checked="" type="radio"/> CENSGR11-12L	<input checked="" type="radio"/> RENSGR11-12L	<input checked="" type="radio"/> VSCGR11-12L	*Complimentary Sharpening Offered
	<input type="radio"/> CESCGR11-12L (shown)	<input type="radio"/> RESCGR11-12L	<input type="radio"/> ESCGR11-12L	<input type="radio"/> RSCGR11-12L
				<input type="radio"/> OPPGR11-12L

## Long Reach Cont.



**Long Reach TruGracey #13-14** All distal surfaces of bicuspid and molars.

Handle Selection:	⊗ CENSGR13-14L	⊗ RENSGR13-14L	Ⓜ VSCGR13-14L	*Complimentary Sharpening Offered
⊗ CESCGR13-14L (shown)	○ RESCGR13-14L	⬡ ESCGR13-14L	● RSCGR13-14L	△ OPPGR13-14L



**Long Reach TruGracey #15-16** Modified version of the Long Reach Gracey 11-12 allows better access and more comfortable hand and finger position for all mesial surfaces of bicuspid and molars.

Handle Selection:	⊗ CENSGR15-16L	⊗ RENSGR15-16L	Ⓜ VSCGR15-16L	*Complimentary Sharpening Offered
⊗ CESCGR15-16L (shown)	○ RESCGR15-16L	⬡ ESCGR15-16L	● RSCGR15-16L	△ OPPGR15-16L



**Long Reach TruGracey #17-18** Modified version of the Long Reach Gracey 13-14 allows better access and more comfortable hand and finger position for all distal surfaces of bicuspid and molars.

Handle Selection:	⊗ CENSGR17-18L	⊗ RENSGR17-18L	Ⓜ VSCGR17-18L	*Complimentary Sharpening Offered
⊗ CESCGR17-18L (shown)	○ RESCGR17-18L	⬡ ESCGR17-18L	● RSCGR17-18L	△ OPPGR17-18L

## Mini Blade – Long Reach

Nordent Mini Blade – Long Reach Gracey curettes have a shorter, narrower blade and an extended terminal shank that is 3 mm longer than standard. They feature our blade face curve with a true radius that conforms to tooth anatomy better than any other brand. This means that Nordent Gracey curettes are easier to adapt, require few strokes, and reduce tissue trauma better than any other brand. Nordent Mini Blade – Long Reach Gracey curettes have a 1 mm terminal shank diameter and blades that are 0.7 mm wide and 3 mm long.



**Mini Blade – Long Reach Gracey #1-2** Short contra-angle for incisors and cuspids.

Handle Selection:	⊗ CENSGR1-2ML	⊗ RENSGR1-2ML	Ⓜ VSCGR1-2ML	*Complimentary Sharpening Offered
⊗ CESCGR1-2ML (shown)	○ RESCGR1-2ML	⬡ ESCGR1-2ML	● RSCGR1-2ML	△ OPPGR1-2ML



**Mini Blade – Long Reach Gracey #3-4** Short contra-angle for incisors and cuspids.

Handle Selection:	⊗ CENSGR3-4ML	⊗ RENSGR3-4ML	Ⓜ VSCGR3-4ML	*Complimentary Sharpening Offered
⊗ CESCGR3-4ML (shown)	○ RESCGR3-4ML	⬡ ESCGR3-4ML	● RSCGR3-4ML	△ OPPGR3-4ML

**HANDLE SYMBOL KEY:** ⊗ XDURA DuraLite ColorRings    ⊗ XDURA DuraLite Round    Ⓜ Relyant  
 ⊗ DuraLite ColorRings    ○ DuraLite Round    ⬡ DuraLite Hex    ● Medium Round    △ OnPoint

## Mini Blade – Long Reach Cont.



**Mini Blade – Long Reach Gracey #5-6** Medium shank and slight contra-angle for bicuspids and molars.

Handle Selection:	<input checked="" type="radio"/> CENSGR5-6ML	<input checked="" type="radio"/> RENSGR5-6ML	<input checked="" type="radio"/> VSCGR5-6ML	*Complimentary Sharpening Offered
<input checked="" type="radio"/> CESCGR5-6ML (shown)	<input type="radio"/> RESCGR5-6ML	<input type="radio"/> ESCGR5-6ML	<input type="radio"/> RSCGR5-6ML	<input type="radio"/> OPPGR5-6ML



**Mini Blade – Long Reach Gracey #7-8** Medium contra-angle for facial and lingual surfaces of bicuspids and molars.

Handle Selection:	<input checked="" type="radio"/> CENSGR7-8ML	<input checked="" type="radio"/> RENSGR7-8ML	<input checked="" type="radio"/> VSCGR7-8ML	*Complimentary Sharpening Offered
<input checked="" type="radio"/> CESCGR7-8ML (shown)	<input type="radio"/> RESCGR7-8ML	<input type="radio"/> ESCGR7-8ML	<input type="radio"/> RSCGR7-8ML	<input type="radio"/> OPPGR7-8ML



**Mini Blade – Long Reach Gracey #11-12** All mesial surfaces of bicuspids and molars.

Handle Selection:	<input checked="" type="radio"/> CENSGR11-12ML	<input checked="" type="radio"/> RENSGR11-12ML	<input checked="" type="radio"/> VSCGR11-12ML	*Complimentary Sharpening Offered
<input checked="" type="radio"/> CESCGR11-12ML (shown)	<input type="radio"/> RESCGR11-12ML	<input type="radio"/> ESCGR11-12ML	<input type="radio"/> RSCGR11-12ML	<input type="radio"/> OPPGR11-12ML



**Mini Blade – Long Reach Gracey #13-14** All distal surfaces of bicuspids and molars.

Handle Selection:	<input checked="" type="radio"/> CENSGR13-14ML	<input checked="" type="radio"/> RENSGR13-14ML	<input checked="" type="radio"/> VSCGR13-14ML	*Complimentary Sharpening Offered
<input checked="" type="radio"/> CESCGR13-14ML (shown)	<input type="radio"/> RESCGR13-14ML	<input type="radio"/> ESCGR13-14ML	<input type="radio"/> RSCGR13-14ML	<input type="radio"/> OPPGR13-14ML



**Mini Blade – Long Reach Gracey #15-16** Modified version of the Mini Blade – Long Reach Gracey 11-12 allows better access and a more comfortable hand and finger position for all mesial surfaces of bicuspids and molars.

Handle Selection:	<input checked="" type="radio"/> CENSGR15-16ML	<input checked="" type="radio"/> RENSGR15-16ML	<input checked="" type="radio"/> VSCGR15-16ML	*Complimentary Sharpening Offered
<input checked="" type="radio"/> CESCGR15-16ML (shown)	<input type="radio"/> RESCGR15-16ML	<input type="radio"/> ESCGR15-16ML	<input type="radio"/> RSCGR15-16ML	<input type="radio"/> OPPGR15-16ML



**Mini Blade – Long Reach Gracey #17-18** Modified version of the Mini Blade – Long Reach Gracey 13-14 allows better access and a more comfortable hand and finger position for all distal surfaces of bicuspids and molars.

Handle Selection:	<input checked="" type="radio"/> CENSGR17-18ML	<input checked="" type="radio"/> RENSGR17-18ML	<input checked="" type="radio"/> VSCGR17-18ML	*Complimentary Sharpening Offered
<input checked="" type="radio"/> CESCGR17-18ML (shown)	<input type="radio"/> RESCGR17-18ML	<input type="radio"/> ESCGR17-18ML	<input type="radio"/> RSCGR17-18ML	<input type="radio"/> OPPGR17-18ML

## Rigid

Nordent Rigid Gracey curettes feature a rigid shank and a longer reach blade and are well-suited to periodontal and surgical application. Nordent Rigid Gracey curettes have a 1.3 mm terminal shank diameter and blades that are 0.9 mm wide and 6 mm long.



**Rigid Gracey #1-2** Short contra-angle for incisors and cuspids. Terminal shank reach is 11 mm.

Handle Selection:	<input checked="" type="checkbox"/> N/A	<input checked="" type="checkbox"/> N/A	<input checked="" type="checkbox"/> VSCG1R-2R	*Complimentary Sharpening Offered
<input checked="" type="checkbox"/> CESC1R-2R (shown)	<input type="checkbox"/> RESC1R-2R	<input type="checkbox"/> ESCG1R-2R	<input type="checkbox"/> RSCG1R-2R	<input type="checkbox"/> N/A



**Rigid Gracey #3-4** Short contra-angle for incisors and cuspids. Terminal shank reach is 11 mm.

Handle Selection:	<input checked="" type="checkbox"/> N/A	<input checked="" type="checkbox"/> N/A	<input checked="" type="checkbox"/> VSCG3R-4R	*Complimentary Sharpening Offered
<input checked="" type="checkbox"/> CESC3R-4R (shown)	<input type="checkbox"/> RESC3R-4R	<input type="checkbox"/> ESCG3R-4R	<input type="checkbox"/> RSCG3R-4R	<input type="checkbox"/> N/A



**Rigid Gracey #5-6** Medium shank and slight contra-angle for bicuspid and molars. Terminal shank reach is 14 mm.

Handle Selection:	<input checked="" type="checkbox"/> N/A	<input checked="" type="checkbox"/> N/A	<input checked="" type="checkbox"/> VSCG5R-6R	*Complimentary Sharpening Offered
<input checked="" type="checkbox"/> CESC5R-6R (shown)	<input type="checkbox"/> RESC5R-6R	<input type="checkbox"/> ESCG5R-6R	<input type="checkbox"/> RSCG5R-6R	<input type="checkbox"/> N/A



**Rigid Gracey #7-8** Medium contra-angle for facial and lingual surfaces of bicuspid and molars. Terminal shank reach is 12 mm.

Handle Selection:	<input checked="" type="checkbox"/> N/A	<input checked="" type="checkbox"/> N/A	<input checked="" type="checkbox"/> VSCG7R-8R	*Complimentary Sharpening Offered
<input checked="" type="checkbox"/> CESC7R-8R (shown)	<input type="checkbox"/> RESC7R-8R	<input type="checkbox"/> ESCG7R-8R	<input type="checkbox"/> RSCG7R-8R	<input type="checkbox"/> N/A



**Rigid Gracey #9-10** Long contra-angle for molars and less accessible root surfaces. Terminal shank reach is 12 mm.

Handle Selection:	<input checked="" type="checkbox"/> N/A	<input checked="" type="checkbox"/> N/A	<input checked="" type="checkbox"/> VSCG9R-10R	*Complimentary Sharpening Offered
<input checked="" type="checkbox"/> CESC9R-10R (shown)	<input type="checkbox"/> RESC9R-10R	<input type="checkbox"/> ESCG9R-10R	<input type="checkbox"/> RSCG9R-10R	<input type="checkbox"/> N/A

<b>HANDLE SYMBOL KEY:</b>	<input checked="" type="checkbox"/> XDURA DuraLite ColorRings	<input checked="" type="checkbox"/> XDURA DuraLite Round	<input checked="" type="checkbox"/> Relyant
<input checked="" type="checkbox"/> DuraLite ColorRings	<input type="checkbox"/> DuraLite Round	<input type="checkbox"/> DuraLite Hex	<input type="checkbox"/> Medium Round <input type="checkbox"/> OnPoint



**Rigid Gracey #11-12** All mesial surfaces of bicuspid and molars. Terminal shank reach is 8 mm.

Handle Selection:	ⓧ N/A	ⓧ N/A	Ⓜ VSCG11R-12R	*Complimentary Sharpening Offered
Ⓞ CESC11R-12R (shown)	○ RESCG11R-12R	⬡ ESCG11R-12R	● RSCG11R-12R	△ N/A



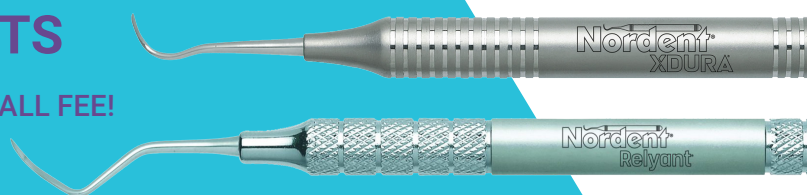
**Rigid Gracey #13-14** All distal surfaces of bicuspid and molars. Terminal shank reach is 7 mm.

Handle Selection:	ⓧ N/A	ⓧ N/A	Ⓜ VSCG13R-14R	*Complimentary Sharpening Offered
Ⓞ CESC13R-14R (shown)	○ RESCG13R-14R	⬡ ESCG13R-14R	● RSCG13R-14R	△ N/A

**HANDLE SYMBOL KEY:** ⓧ XDURA DuraLite ColorRings   ⓧ XDURA DuraLite Round   Ⓜ Relyant  
 Ⓞ DuraLite Colorings   ○ DuraLite Round   ⬡ DuraLite Hex   ● Medium Round   △ OnPoint

**HATE SHARPENING?  
 ENJOY COMPLIMENTARY  
 SHARPENING ON XDURA  
 AND ONPOINT INSTRUMENTS!  
 ON SELECT PRODUCTS**

**PLUS ALL OTHER BRANDS FOR A SMALL FEE!**



- Complimentary fast sharpening for all Nordent® Relyant® and XDURA® instruments
- Have Nordent experts sharpen all your instruments in one place, all brands
- Nordent provides the packaging along with a simple request form

**How It Works:**

1. Request COMPLIMENTARY Nordent Shipping Kit.
2. Print label from our website.
3. Pack and ship.

# HARTZELL™ CONE SOCKET

## SCALERS AND CURETTES



Signature stainless steel or sharpen-free titanium nitride (TiN) coated tips

Lightweight, ergonomically designed 9.5 mm diameter handle

Secure, comfortable handle grip

## The original Hartzell™ cone socket instrument that you know and trust is back!

### Save Costs

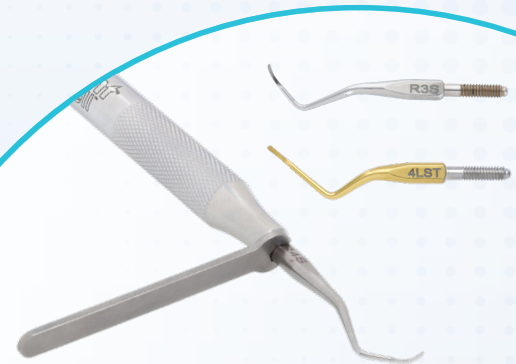
Replace one tip at a time when needed with Hartzell cone socket instruments, saving on the lifetime cost of your scalers and cures.

### Environmentally Friendly

Disposing of the tips instead of the full instrument allows your dental office to reduce waste compared to using conventional instruments.

### Mix & Match

Customize your Hartzell handle with your preferred instrument tips: Our tried-and-true signature stainless steel tips or long-lasting, sharpen-free titanium nitride (TiN) infused tips. Both are available to suit your unique preferences.

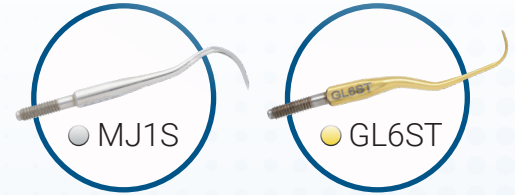


**The original Hartzell designs are now masterfully produced by the craftspeople at Nordent®**

# Available Hartzell™ Cone Socket Scalers and Curettes



TIP DESCRIPTION	440A	TiN
Hartzell UC/Ratcliff 1, C	R1S	R1ST
Hartzell UC/Ratcliff 2, C	R2S	R2ST
Hartzell Ratcliff 3, C	R3S	R3ST
Hartzell Ratcliff 4, C	R4S	R4ST
Hartzell Anterior Offset Sickle N6, S	S6S	S6ST
Hartzell Anterior Offset Sickle N7, S	S7S	S7ST
Hartzell Universal Offset Sickle NMJ Left, S	MJ1S	MJ1ST
Hartzell Universal Offset Sickle NMJ Right, S	MJ2S	MJ2ST
Hartzell Gracey 5 Rigid, C	GL5S	GL5ST
Hartzell Gracey 6 Rigid, C	GL6S	GL6ST
Hartzell Gracey 7 Rigid, C	GL7S	GL7ST
Hartzell Gracey 8 Rigid, C	GL8S	GL8ST
Hartzell Gracey 11 Rigid, C	GL11S	GL11ST
Hartzell Gracey 12 Rigid, C	GL12S	GL12ST
Hartzell Gracey 13 Rigid, C	GL13S	GL13ST
Hartzell Gracey 14 Rigid, C	GL14S	GL14ST
Hartzell Columbia 4 Right, C	4RS	4RST
Hartzell Columbia 4 Left, C	4LS	4LST
Hartzell Posterior Sickle 204S Right, S	204RS	204RST
Hartzell Posterior Sickle 204S Left, S	204LS	204LST
Hartzell Cone Socket Handle	CSHA	

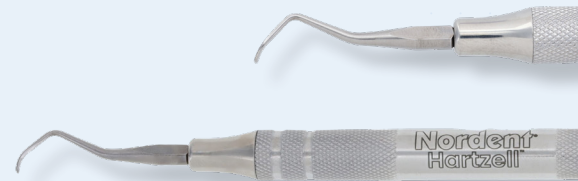


“I’m thrilled to partner with the Nordent Team to reintroduce the iconic Hartzell designs to the dental industry.”

–Andrew McIver-Hartzell

**\*\*All Hartzell Tips Attach to CSHA Handle  
Hartzell Wrench= WRHZ**

**C= Curette  
S= Scaler**



A passion for premium craftsmanship and industry-leading innovations has transformed Nordent over the last 55 years into the market leader you know today. Behind the sharpest name in dentistry is a team of trusted advisors dedicated to your success and ready to provide you with unbeatable support.



**PREMIUM  
CRAFTSMANSHIP**



**TRUSTED  
ADVISOR**



**UNBEATABLE  
SUPPORT**

© 2024 Nordent and all other marks are registered trademarks of Nordent Manufacturing Inc. All rights reserved. Product and specifications are subject to change without notice.



T: 800.966.7336 US & Canada | T: 847.437.4780 | F: 847.437.4786  
customerservice@nordent.com | www.nordent.com

# HARTZELL™ TIPS

Nordent standard Gracey curettes feature a standard Gracey blade that is ideal for oblique and horizontal strokes. Nordent standard Gracey curettes are ideal for day to day hygiene and SRP when multidirectional strokes are often required.



**Hartzell UC/Ratcliff 1, C**

Tip Selection:  R1S  R1ST



**Hartzell UC/Ratcliff 2, C**

Tip Selection:  R2S  R2ST



**Hartzell Ratcliff 3, C**

Tip Selection:  R3S  R3ST



**Hartzell Ratcliff 4, C**

Tip Selection:  R4S  R4ST



**Hartzell Anterior Offset Sickle N6, S**

Tip Selection:  S6S  S6ST



**Hartzell Anterior Offset Sickle N7, S**

Tip Selection:  S7S  S7ST



**Hartzell Universal Offset Sickle NMJ Left, S**

Tip Selection:  MJ1S  MJ1ST



**Hartzell Universal Offset Sickle NMJ Right, S**

Tip Selection:  MJ2S  MJ2ST



**Hartzell Gracey 5 Rigid, C**

Tip Selection:  GL5S  GL5ST



**Hartzell Gracey 6 Rigid, C**

Tip Selection:  GL6S  GL6ST



**Hartzell Gracey 7 Rigid, C**

Tip Selection:  GL7S  GL7ST



**Hartzell Gracey 8 Rigid, C**

Tip Selection:  GL8S  GL8ST



**Hartzell Gracey 11 Rigid, C**

Tip Selection:  GL11S  GL11ST



**Hartzell Gracey 12 Rigid, C**

Tip Selection:  GL12S  GL12ST



**Hartzell Gracey 13 Rigid, C**

Tip Selection:  GL13S  GL13ST

## Hartzell™ Tips Cont.



**Hartzell Gracey 14 Rigid, C**

Tip Selection:  GL14S  GL14ST



**Hartzell Columbia 4 Right, C**

Tip Selection:  4RS  4RST



**Hartzell Columbia 4 Left, C**

Tip Selection:  4LS  4LST



**Hartzell Posterior Sickle 204S Right, S**

Tip Selection:  204RS  204RST



**Hartzell Posterior Sickle 204S Left, S**

Tip Selection:  204LS  204LST

## Hartzell™ Accessories



**Hartzell™ Handle**

CSHA



**Hartzell™ Wrench**

WRHZ

### Hartzell™ Wrench

- Effortless Tip Changes: Securely tighten Hartzell tips to the handle.
- Precision Engineering: Ensures a perfect fit every time.
- User-Friendly Design: Ergonomic handle for comfortable use.

# ONPOINT™

## SCALERS AND CURETTES

PREMIUM DESIGN PRICED FOR YOUR PRACTICE



Nordent **ColorRings®** provide you with a fun way to personalize your hygiene instruments.

Discover **enhanced comfort** with the **10 mm updated handle design**.

Nordent **UltraSteel™ technology** for a long-lasting edge.

### Premium Quality

Nordent tips made in the USA by master craftsmen.

### Sharper

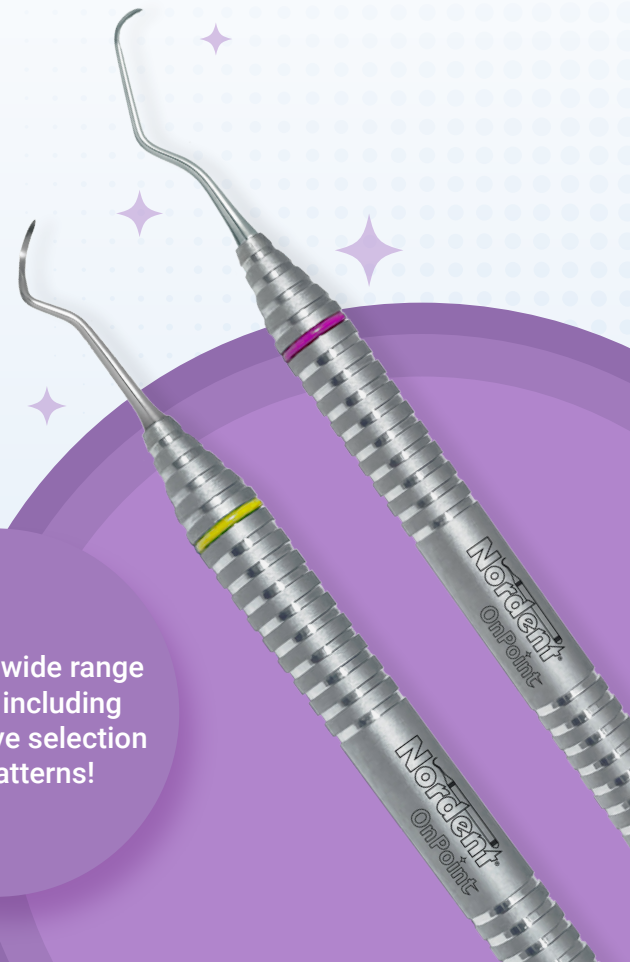
UltraSteel™ technology results in tips with long-lasting sharpness and strength.

### Customizable

Nordent OnPoint handles come with two interchangeable ColorRings®, one on each end of the instrument.

# OnPoint™

Explore our wide range of patterns, including our extensive selection of Gracey patterns!



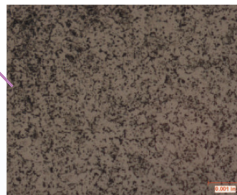
# ONPOINT™ SCALERS AND CURETTES

## Nordent UltraSteel™ Technology

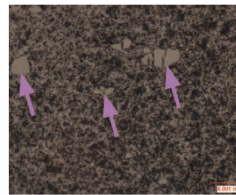
UltraSteel technology takes advantage of advancements in metallurgy and cryogenic hardening to produce a micro-structure not previously possible. All other scalers are made from stainless steels that have large, isolated carbide molecules. This is why hardness and wear resistance can be inconsistent.

UltraSteel technology features extremely fine carbide particles that are evenly distributed throughout the micro-structure, resulting in tips with long-lasting sharpness and strength.

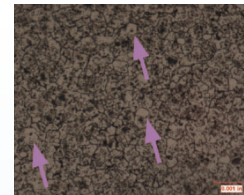
Under **500x magnification**, these SEM photos clearly show the **superior micro-structure** and **uniform carbide particle distribution** of our Nordent UltraSteel technology.



UltraSteel Technology  
Scalers & Currettes



Leading sharpen-less scaler



All other major brands (440A)

## Extensive Selection of Gracey Instruments

Whether your preference is Nordent's own TRUGracey® or traditional Gracey patterns, our selection meets all your patient needs.



OPPGR1-2



OPPGR7-8



OPPGR11-12



OPPGR13-14

View our full section of scaler and curette patterns at [nordent.com](http://nordent.com)



A passion for premium craftsmanship and industry-leading innovations has transformed Nordent over the last 55 years into the market leader you know today. Behind the sharpest name in dentistry is a team of trusted advisors dedicated to your success and ready to provide you with unbeatable support.



**PREMIUM  
CRAFTSMANSHIP**



**TRUSTED  
ADVISOR**




**UNBEATABLE  
SUPPORT**

# ONPOINT™ GRACEY CURETTES

OnPoint Gracey Curettes feature a standard Gracey blade that is ideal for oblique and horizontal strokes. Nordent standard Gracey curettes are ideal for day-to-day hygiene and SRP when multidirectional strokes are often required. OnPoint™ featuring our long-lasting UltraSteel™ edge and customizable ColorRings®.




**OnPoint™ Curette, DE, Gracey #1-2** Nordent standard Gracey curettes have a 1.1 mm terminal shank diameter and blades that are 0.9 mm wide and 4 mm long.

Handle Selection:  *OPPGA1-2 (shown)*




**OnPoint™ Curette, DE, Gracey #3-4** Nordent standard Gracey curettes have a 1.1 mm terminal shank diameter and blades that are 0.9 mm wide and 4 mm long.

Handle Selection:  *OPPGA3-4 (shown)*




**OnPoint™ Curette, DE, Gracey #5-6** Nordent standard Gracey curettes have a 1.1 mm terminal shank diameter and blades that are 0.9 mm wide and 4 mm long.

Handle Selection:  *OPPGA5-6 (shown)*




**OnPoint™ Curette, DE, Gracey #7-8** Nordent standard Gracey curettes have a 1.1 mm terminal shank diameter and blades that are 0.9 mm wide and 4 mm long.

Handle Selection:  *OPPGA7-8 (shown)*




**OnPoint™ Curette, DE, Gracey #9-10** Nordent standard Gracey curettes have a 1.1 mm terminal shank diameter and blades that are 0.9 mm wide and 4 mm long.

Handle Selection:  *OPPGA9-10 (shown)*

## OnPoint Gracey Curettes Cont.



**OnPoint™ Curette, DE, Gracey #11-12** Nordent standard Gracey curettes have a 1.1 mm terminal shank diameter and blades that are 0.9 mm wide and 4 mm long.

Handle Selection:  *OPPGA11-12 (shown)*




**OnPoint™ Curette, DE, Gracey #11-14** Nordent standard Gracey curettes have a 1.1 mm terminal shank diameter and blades that are 0.9 mm wide and 4 mm long.

Handle Selection:  *OPPGA11-14 (shown)*




**OnPoint™ Curette, DE, Gracey #12-13** Nordent standard Gracey curettes have a 1.1 mm terminal shank diameter and blades that are 0.9 mm wide and 4 mm long.

Handle Selection:  *OPPGA12-13 (shown)*




**OnPoint™ Curette, DE, Gracey #13-14** Nordent standard Gracey curettes have a 1.1 mm terminal shank diameter and blades that are 0.9 mm wide and 4 mm long.

Handle Selection:  *OPPGA13-14 (shown)*



**OnPoint™ Curette, DE, Gracey #15-16** Nordent standard Gracey curettes have a 1.1 mm terminal shank diameter and blades that are 0.9 mm wide and 4 mm long.

Handle Selection:  *OPPGA15-16 (shown)*



**OnPoint™ Curette, DE, Gracey #17-18** Nordent standard Gracey curettes have a 1.1 mm terminal shank diameter and blades that are 0.9 mm wide and 4 mm long.


Handle Selection:  *OPPGA17-18 (shown)*

## OnPoint Gracey Long Reach Curettes

Nordent long reach Gracey curettes have an extended terminal shank that is 3 mm longer than standard. They feature a standard Gracey blade that is ideal for oblique and horizontal strokes. Nordent standard Gracey curettes are ideal for day to day hygiene and SRP when multidirectional strokes are often required. Nordent long reach Gracey curettes have a 1.1 mm terminal shank diameter and blades that are 0.9 mm wide and 7 mm long.




**OnPoint™ Curette, DE, Gracey Long Reach #1-2L** Nordent long reach Gracey curettes have a 1.1 mm terminal shank diameter and blades that are 0.9 mm wide and 7 mm long.

Handle Selection:  OPPGRA1-2L (shown)




**OnPoint™ Curette, DE, Gracey Long Reach #3-4L** Nordent long reach Gracey curettes have a 1.1 mm terminal shank diameter and blades that are 0.9 mm wide and 7 mm long.

Handle Selection:  OPPGRA3-4L (shown)



**OnPoint™ Curette, DE, Gracey Long Reach #5-6L** Nordent long reach Gracey curettes have a 1.1 mm terminal shank diameter and blades that are 0.9 mm wide and 7 mm long.

Handle Selection:  OPPGRA5-6L (shown)




**OnPoint™ Curette, DE, Gracey Long Reach #7-8L** Nordent long reach Gracey curettes have a 1.1 mm terminal shank diameter and blades that are 0.9 mm wide and 7 mm long.

Handle Selection:  OPPGRA7-8L (shown)



**OnPoint™ Curette, DE, Gracey Long Reach #11-12L** Nordent long reach Gracey curettes have a 1.1 mm terminal shank diameter and blades that are 0.9 mm wide and 7 mm long.

Handle Selection:  OPPGRA11-12L (shown)

## OnPoint Gracey Curettes Cont.



**OnPoint™ Curette, DE, Gracey Long Reach #13-14L** Nordent long reach Gracey curettes have a 1.1 mm terminal shank diameter and blades that are 0.9 mm wide and 7 mm long.

Handle Selection: △ OPPGRA13-14L (shown)



**OnPoint™ Curette, DE, Gracey Long Reach #15-16L** Nordent long reach Gracey curettes have a 1.1 mm terminal shank diameter and blades that are 0.9 mm wide and 7 mm long.

Handle Selection: △ OPPGRA15-16L (shown)

•Hardness & Sharpness

Unlike traditional stainless steels with large, isolated carbide molecules, UltraSteel™ features extremely fine carbide particles evenly distributed throughout, resulting in tips with long-lasting sharpness and strength.

•Detailed Micro-Structure

Under 500x magnification, SEM photos reveal the superior micro-structure and uniform carbide particle distribution of Nordent UltraSteel™, highlighting its advanced technology.

•Customizable

Nordent OnPoint handles come with two interchangeable ColorRings®



## ONPOINT™ UNIQUE DESIGNS

Created to make your procedures more efficient.

### OnPoint Curettes



**OnPoint™ Curette, DE, Universal R144** Universal periodontal curette with two 6mm cutting edges for furcations and deep pockets. Angled for easier molar access and improved patient comfort. Featuring our long-lasting UltraSteel™ edge and customizable ColorRings®

Handle Selection: △ OPPR144 (shown)

# OnPoint Scalers



**OnPoint™ Scaler, DE, Universal Sickle Offset #4** Universal periodontal curette with two 6mm cutting edges for furcations and deep pockets. Angled for easier molar access and improved patient comfort. Featuring our long-lasting UltraSteel™ edge and customizable ColorRings®

Handle Selection:	ⓧ CENSN4	ⓧ RENSN4	Ⓜ VSCN4	*Complimentary Sharpening Offered
Ⓞ CESC4	Ⓞ RESCN4	Ⓜ ESCN4	Ⓞ RSCN4	△ OPPN4 (shown)



**OnPoint™ Scaler, DE, Anterior Sickle University of Nebraska #128-128** Universal periodontal curette with two 6mm cutting edges for furcations and deep pockets. Angled for easier molar access and improved patient comfort. Featuring our long-lasting UltraSteel™ edge and customizable ColorRings®

Handle Selection:	ⓧ CENSNE128-128	ⓧ RENSNE128-128	Ⓜ VSCNE128-128	*Complimentary Sharpening Offered
Ⓞ CESCNE128-128	Ⓞ RESCNE128-128	Ⓜ ESCNE128-128	Ⓞ RSCNE128-128	△ OPPNE128-128 (shown)

**HANDLE SYMBOL KEY:** ⓧ XDURA DuraLite ColorRings   ⓧ XDURA DuraLite Round   Ⓜ Relyant  
 Ⓞ DuraLite ColorRings   Ⓞ DuraLite Round   Ⓜ DuraLite Hex   Ⓞ Medium Round   △ OnPoint

## Hygiene Hero Kit

Available with XDURA or Relyant Scalers and Curettes.

Additional Benefits 20% off replacement scalers/curettes. Complimentary, Professional Sharpening\*

Kit: CHD1-8N7

### XDURA

AVAILABLE PRODUCTS	
HM16	Duralite® ROUND Mirror Handle, Cone Socket
M5	Mirror Head, Front Surface, Cone Socket #5 (15/16" Diameter)
REPCN33-23	Expro, DE, (3-6-9-12 mm) Color Coded Probe-Explorer #23
REEX11-12	Explorer, DE, Old Dominion University (ODU) #11-12
RENSNMJ	XDURA Scaler, DE, Offset Sickle NMJ Universal R138
REN204S	XDURA Scaler, DE, Posterior Sickle #204S
RENSBH5-6	XDURA Curette, DE, Barnhart #5-6
CHD1-8N7	Cassette, Small, Stainless Steel, 8 Instruments, Purple, 3"X8"

Kit: CHD1-8N7

### Relyant

AVAILABLE PRODUCTS	
HM16	Duralite® ROUND Mirror Handle, Cone Socket
M5	Mirror Head, Front Surface, Cone Socket #5 (15/16" Diameter)
REPCN33-23	Expro, DE, (3-6-9-12 mm) Color Coded Probe-Explorer #23
REEX11-12	Explorer, DE, Old Dominion University (ODU) #11-12
VSCNMJ	Scaler, DE, Offset Sickle NMJ Universal R138
VSC204S	Scaler, DE, Posterior Sickle #204S
VSCBH5-6	Curette, DE, Barnhart #5-6
CHD1-8N7	Cassette, Small, Stainless Steel, 8 Instruments, Purple, 3"X8"

\*Relyant and XDURA program details apply to U.S. customers. For information about Relyant and XDURA in your country, please contact Nordent Customer Service.

**Nordent**<sup>®</sup>